



Kerry Local Authorities
Annual Report 2007





Kerry Local Authorities

Annual Report 2007



CONTENTS

Foreword by An Mhéara

County Manager's Statement

REPORT ON THE ACTIVITIES OF KERRY COUNTY COUNCIL

Members of Kerry County Council

Report on Council Meetings

Report on Electoral Area Meetings

Report on Corporate Policy Group & Strategic Policy Committees

Membership of Boards/Committees

Conferences Attended

DIRECTORS OPERATIONAL REPORTS

Director of Housing & Social Support

Director of Roads & Transportation

Director of Environment

Director of Water Services & Fire Service

Director of Economic Planning & Development

Director of Community, Culture, Heritage & Recreation

Director of Corporate Services

FINANCIAL STATEMENT

Financial Management

REPORT FROM KERRY COUNTY ENTERPRISE BOARD

Kerry County Enterprise Board

REPORTS FROM THE TOWN COUNCILS

Tralee Trá Lí

Killarney Cill Airne

Listowel Lios Tuathail

NATIONAL SERVICE INDICATORS

RECRUITMENT GENDER BALANCE

CORPORATE PLAN REVIEW

FOREWORD BY AN MHÉARA



As Mayor of this great county, I am delighted to have the honour of introducing the 2007 Annual Report.

Once more, a huge amount of work has been carried out by the Council during 2007 for the betterment of the county. This work has been carried out in a very professional manner, despite the staff carrying a large workload. I would like to thank them and Management for their continued efforts, which continue to be of the highest standard.

One of the Council's biggest ventures, the roll-out of Local Area Plans for 87 towns and villages in Kerry, continued throughout 2007. This allows for the future growth of these areas to be carried out in a co-ordinated and planned manner.

The approval by councillors of a Supplementary Development Contribution Scheme for An Daingean Relief Road and Associated Car Park, will help advance a much needed relief road for the West Kerry town. Work on this is expected to begin in 2008.

In addition, a large programme of works is being carried out by the Water Services Department in relation to the provision of new water and sewage schemes.

The Council also recognises the importance of the environment, and the extent to which it supports tourism, a major contributor to the economy.

A number of projects were approved by the elected members, such as the Beach Bye-Laws, and the Heritage and Bio-Diversity Plan. These will be of huge assistance in maintaining the county to the high standards that locals and visitors expect.

So too will the work carried out by the Environment Department, which sees Kerry home to 13 Blue Flag beaches, the highest number in the country.

However, major challenges lie ahead for the Council in the coming years. The economic downturn will have an impact on the funding received from Government. This in turn will impact on the Council's ability to fund projects and activities.

It is a challenge that we as elected members, along with staff and management, must face to ensure that Kerry can continue to develop and to remain attractive as a destination for living and for visiting.

It is important to note the contribution that the rate-payers of this county make, through the payment of rates and other charges. In addition other bodies, especially voluntary and community organisations, give freely of their time for the benefit of the county.

I would like to thank my fellow councillors for the work they carried out during 2007. Together with the staff and management of the Council, we are all working together for a better Kerry.

Cllr. Michael Healy Rae
Mayor of the County of Kerry

COUNTY MANAGER'S STATEMENT



I am delighted this year, to present the Annual Report for the four Kerry Local Authorities for the year 2007. This is my first report as County Manager, having being appointed during 2007.

I would like to thank my predecessor Mr. Martin Riordan for his commitment to the County during his tenure as County Manager from August 2004 to February 2007 and to wish him well in his new post as Cork County Manager.

In 2007, Kerry Local Authorities spent a total of €344m on the provision and maintenance of services, with revenue expenditure amounting to €173m and capital expenditure of €171m.

We continue to extend and improve our services within the constraints of available financial resources. One of the core functions of Local Authorities is to provide and enhance the infrastructure of the County which will sustain and encourage economic growth, as well as planning for the future.

With approximately 57% of our funding coming from Central Government it means that Local Authorities are over-reliant on Central Government and any downturn in the National Economy will have an impact on what services can be provided for the citizens of the County in the future.

In 2007, the Forward Planning Section continued the work commenced in 2006 by preparing a further 48 Local Area Plans which were adopted by the Council. The balance of the 87 Local Area Plans will be completed in 2008.

These Local Area Plans set out the vision for the development of these towns and villages and identifies the essential infrastructure such as water, wastewater, roads, footpaths, playgrounds and open spaces required to allow these towns and villages to grow.

A Capital Investment Programme costing over €530m has been drawn up, which will be delivered over the coming years as finances allow. However, over €176m of this sum will need to be raised locally. Priority will be

given to water and wastewater infrastructure.

The Annual Report 2007 sets out, under each Directorate and Town Council, the progress and activity achieved over a wide range of services.

Key activities in 2007

- ☆ 123 Social Housing Units constructed and let and a further 127 units commenced construction.
- ☆ €52m spent on the planning, design, improvement and maintenance of roads, with over 200km improved.
- ☆ Over €31m collected by Motor Tax Office and over 60,000 vehicles registered in the County.
- ☆ Over 35 million cubic metres of potable water produced.
- ☆ New sewerage schemes under construction in Barraduff, Kilcummin, Milltown, Furies, Sneem and Waterville, where a new water scheme is also under construction.
- ☆ 57,000 tonnes of waste disposed of at Muingnaminnane Landfill.
- ☆ New civic amenity site under construction in Dingle, which will be opened to the public in 2008.
- ☆ 13 no. Blue Flag beaches in Kerry.
- ☆ 51 no. schools have been awarded Green Flags, an increase of six over 2006
- ☆ New Electronic "Pay Per Use" introduced in Refuse Collection Service.

COUNTY MANAGER'S STATEMENT

- ☆ €4m spent on coastal protection works at Inch.
- ☆ €5.7m spent on running the Fire Service for the County.
- ☆ Tralee Fire Station extended and refurbished.
- ☆ 4,427 Planning Applications received, down 4% on 2006.
- ☆ Review of County Development Plan and Town Development Plans commenced.
- ☆ New Broadband Infrastructure installed in Tralee, with link to Castleisland and Killarney and Listowel.
- ☆ County Enterprise Board supported the creation of 78 new jobs as well as providing mentoring to existing businesses and supporting a "Start Your Own Business" Course.
- ☆ Success in National Tidy Towns Competition by -Killarney – winning Ireland's Tidiest Large Town, Ireland's Best Kept Town and a Gold Medal in Entente Florale Competition.
 - Tralee – achieving Silver Medal in Large Town Category
 - Listowel – achieving Bronze Medal in its category.
- ☆ Publication of "Access for All" Implementation Plan 2008-2009
- ☆ Publication of Library Development Plan 2007-2012
- ☆ Publication of a County Heritage Plan including Kerry's first Biodiversity Plan.
- ☆ Provision of first Art Piece dedicated to Kerry's Football Heroes at Clashleahane Roundabout.

During 2007 the Elected Council, through Area Committees and Strategic Policy Committees, provided guidance and direction across the four Local Authorities. I would like to thank all the Elected Members, and the Chairs and Members of the SPCs for their support and significant contribution to the development of policies in 2007.

The Council continues to provide enhanced, effective and efficient services to the people of the County. This can be measured by examining the National Service Indicator Report for 2007 and comparing the trends in the published data since 2004. They also reflect our commitment to being accountable for our performance.

Such services could not be provided in a cost effective manner without the hard work and dedication of our staff and I wish to thank them for their commitment and support.

I would like to pay a special tribute to all the Mayors of the four Local Authorities, who held office in 2007, for their dedication to their organisations and for their guidance, help and courtesy.

Finally, I would like to thank the people of Kerry and the Business Community for their support of our public services, and the Community Groups and Voluntary Organisations for their unselfish and dedicated work on behalf of young and old.

Please continue the good work.

Tom Curran
County Manager

Section 1

MEMBERSHIP OF KERRY COUNTY COUNCIL 2007

Membership of Kerry County Council

There are 27 Councillors representing five electoral areas
– An Daingean, Killarney, Killorglin, Listowel and Tralee.

Mayor

Cllr. Michael Healy Rae

Deputy Mayor

Cllr. Danny Healy Rae



MEMBERSHIP OF KERRY COUNTY COUNCIL 2007

TRALEE LOCAL ELECTORAL AREA



Toiréasa Ferris,
Barrow, Ardfert, Co. Kerry (SF)



Terry O'Brien,
Tonevane, Tralee (Lab.)



Anne McEllistrim,
Ahane, Ballymacelligott, Tralee
(FF)



Norma Foley,
St. Joseph's Guest House, 2
Staughton's Row, Tralee (FF)



Bobby O'Connell,
15 Main Street, Castleisland.
(FG)



Ted Fitzgerald,
Clash Cross, Tralee. (FF)



Patrick Joseph McCarthy,
Maglass, Ballymacelligott,
Tralee (FG)

MEMBERSHIP OF KERRY COUNTY COUNCIL 2007

KILLARNEY LOCAL ELECTORAL AREA



Tom Fleming,
Scartaglin Village, Killarney
(FF)



Colin Miller,
Faha, Killarney (FF)



Brendan Cronin,
Rathcomane, Ballyhar,
Killarney. (Non-Party)



Michael Gleeson,
Clasheen, Killarney. (SKIA)



Danny Healy-Rae,
Main Street, Kilgarvan. (Non-Party)



John Sheahan,
Coolgarrive, Tralee Road,
Killarney. (FG)
(From 18th June 2007)*

MEMBERSHIP OF KERRY COUNTY COUNCIL 2007

LISTOWEL LOCAL ELECTORAL AREA



John Brassil,
Ballyheigue. (FF)



Tim Buckley,
Knockane, Listowel. (FG)



Pat Leahy,
Clounbrane, Moyvane. (Lab.)



Liam Purtill,
Quay Street, Ballylongford.
(FG)



Robert Beasley,
Puicín, Doon Road,
Ballybunion (SF)



Dan Kiely,
East End, Ballybunion. (FF)
(From 24th September 2007)*

MEMBERSHIP OF KERRY COUNTY COUNCIL 2007

KILLORGLIN LOCAL ELECTORAL AREA



**Johnny Porridge
O'Connor,**
Ardmoniel, Killorglin (FG)



Michael Healy-Rae,
Sandymount, Kilgarvan. (Non-
Party)



Michael Cahill,
Rossbeigh, Glenbeigh. (FF)



Paul O'Donoghue,
Castlequin, Cahirciveen. (FF)



Michael Connor-Scarteen,
Main Street, Kenmare. (FG)

MEMBERSHIP OF KERRY COUNTY COUNCIL 2007

AN DAINGEAN LOCAL ELECTORAL AREA



Michael O'Shea,
Main Street, Milltown. (FF)



Séamus Cosáí Fitzgerald,
Droichead Bán, Na Gleannta,
An Daingean. (FG)



Breandán MacGearailt,
Márthain, Baile 'n
Fheirtéaraigh. (FF)

* In May 2007 Cllr. Tom Sheahan was elected to Dáil Éireann and in July 2007 Cllr. Ned O'Sullivan was elected to Seanad Éireann following which they both resigned from Kerry County Council.

Cllrs John Sheahan and Dan Kiely were co-opted to fill their Council seats.

REPORT ON COUNCIL MEETINGS

Council Meetings are held on the third Monday of each month (except August) in the Council Chambers at County Buildings, Rathass, Tralee. During 2007 the full Council met on 21 occasions.

The agenda and reports for council meetings are given to members on CD-ROM. This has resulted in a substantial reduction in the volume of paper used for Council meetings. The new IT system for the payment of members expenses, annual allowances etc. was implemented in 2007. A new IT system for Council meetings is being developed and this will be available in 2008.

One of the key responsibilities of the Council is for the determination of policies to ensure the effective delivery of services to the people of Kerry. During 2007, the following major decisions were made by Council.

- ★ Making of Local Area Plan for Farranfore (January Special Meeting)
- ★ Making of Local Area Plan for Environs of Tralee & Killarney (January Special Meeting)
- ★ Making of a Supplementary Development Contribution Scheme for An Daingean Relief Road and Associated Car Park, Pursuant to Section 49 of the Planning & Development Act 2000 (March Meeting)
- ★ Adoption of Kerry County Council's Litter Management Plan 2007-2010 (April Meeting)
- ★ Making of Local Area Plan for Ballybunion (April Special Meeting)
- ★ Making of Local Area Plan for Rathmore (April Special Meeting)
- ★ Approved the take over of the Banemore Group Water Supply Scheme (May Meeting)
- ★ Adoption of Kerry County Council's (Amended) Beach Bye Laws 2007 (May Meeting)
- ★ Adoption of Kerry County Council's (Recreation and Personal Watercraft) Bye Laws 2007 (May Meeting).

- ★ Making of the An Daingean Town Park Bye Laws 2007 (June Meeting)
- ★ Adoption of Kerry County Council's Heritage & Bio-Diversity Plan 2008-2012 (Sept Meeting)
- ★ Making of Local Area Plan for West An Daingean Peninsula Settlements (September Special Meeting)
- ★ Making of Local Area Plan for North Kerry Settlements (September Special Meeting)
- ★ Approved the establishment of an Audit Committee (October Meeting)
- ★ Adoption of Kerry County Council's Library Development Plan 2007-2012 (October Meeting)
- ★ Making of a Traffic Management Plan for Ballybunion (October Meeting)
- ★ Making of Local Area Plan for South East Kerry Settlements (December Special Meeting)
- ★ Making of Local Area Plan for West Iveragh Settlements (December Special Meeting)
- ★ Adoption of Kerry County Council "Access for All" Implementation Plan 2008-2015 (December Meeting)
- ★ Making of Kerry County Council's Playground Bye Laws 2008 (December Meeting)

The Mayor of Kerry hosted Civic Receptions during the year to honour the achievements of the following:-

- ★ David Geaney and John Fitzgerald, World Champion Irish Dancers
- ★ Ring of Kerry Cycle Committee
- ★ Dr. Brian McCarthy, FEXCO
- ★ Ardfert Intermediate Football Team
- ★ Kerry Hospice Foundation
- ★ Kerry Senior Football Team for winning the All Ireland Football Title

REPORT ON ELECTORAL AREA MEETINGS

The Electoral Area Committees meet at least five times annually, every two months except in July and August

<i>Electoral Area</i>	<i>Chair</i>	<i>Area Manager</i>	<i>No of meetings</i>
An Daingean	Comh Breandán MacGearailt	Mr. Charlie O'Sullivan	5
Killarney	Cllr. Michael Gleeson	Mr. John Breen	5
Killorglin	Cllr. Paul O'Donoghue	Mr. John Flynn	5
Listowel	Cllr. Pat Leahy	Ms. Ann Haugh	5
Tralee	Cllr. Ted Fitzgerald	Mr. Michael McMahon	5

A simultaneous translation system was introduced at An Daingean Electoral Area Meetings during 2007 to improve the use of Irish at meetings in line with the objectives of the Council's Scéim Gaeilge



Mayor of Kerry, Cllr Ted Fitzgerald and County Manager, Tom Curran with the organising committee of the Ring of Kerry Charity Cycle, who were honoured with a civic reception by Kerry County Council.

REPORT ON CORPORATE POLICY GROUP & STRATEGIC POLICY COMMITTEES

Corporate Policy Group

The Corporate Policy Group is a Committee of the Council, whose membership comprises of the Mayor and the Chairpersons of the five Strategic Policy Committees.

The Committee co-ordinates the work of the different SPCs and provides a forum where policy positions affecting two or more SPCs are agreed for submission to the full Council. The full Council retains the decision making responsibility on all policies recommended by an SPC.

The Corporate Policy Group met on 10 occasions in 2007.



World Champions in Irish Dancing, John Fitzgerald and David Geaney were honoured with a civic reception by Kerry County Council.

REPORT ON CORPORATE POLICY GROUP & STRATEGIC POLICY COMMITTEES



Transport SPC

Report by Cllr Dan Kiely (Chair)

Cllr. Kiely was elected as chairperson by Council at its meeting of the 24th September 2007, replacing Cllr. Michael O'Shea in the position. The Transport SPC would like to pay tribute to Cllr O'Shea for serving as Chair.

The Committee met on two occasions during 2007. Following the adoption of local area plans for most settlements in the County, the primary issues considered by the committee during the year focused on the provision of the infrastructure identified in these plans.

In particular the committee considered a number of reports on the provision and funding of relief roads and car/coach parking in our major towns. These will be progressed further during 2008.

The Committee also considered the implications for Kerry Local Authorities of the Road Safety Strategy 2007-2012. The Strategy was prepared by the Road Safety Authority and launched by the Minister for Transport, Mr. Noel Dempsey, T.D. in October 2007.

Having regard to this Strategy, Kerry County Council, through the SPC, will develop an Action Plan in conjunction with An Garda Síochána, the HSE and the NRA to improve safety on Kerry roads and reduce the number of fatalities and serious injuries in 2008.

Membership

<i>Councillors</i>	<i>Sectors Represented</i>	<i>Representatives</i>
Cllr. Dan Kiely	Trade Union	Mr. Tommy Murphy
Mr. Michael O'Shea	Agriculture/Farming	Mr. Denis O'Carroll
Ms. Anne McEllistrim	Community/ Voluntary	Ms. Hilary Scanlon
Mr. Pat Leahy		
Mr. Michael Connor-Scarteen		
Mr. Johnny Wall	Tralee Town Council	

REPORT ON CORPORATE POLICY GROUP & STRATEGIC POLICY COMMITTEES



Environment SPC

Report by Cllr Bobby O'Connell (Chair)

Cllr Bobby O'Connell took over the chair of the Environment SPC, replacing Cllr Johnny O'Connor. Cllr O'Connor was thanked for his efforts as Chair of the committee.

The SPC held three meetings during the year and dealt with many wide-ranging issues. The Committee considered policy issues and brought reports to Council in the following areas:

- ★ Beach Bye-Laws and Recreational Craft and Personal Watercraft Bye-Laws 2007
- ★ Water Metering Project
- ★ Replacement Waste Management Plan 2006 - 2011
- ★ Waste Silage Wrap Pilot Scheme
- ★ National Water Services Investment Programme

A very successful Environmental Awards Scheme was run during 2007, with the proposal for the scheme originally coming from the Environment SPC.

Kerry County Council received over 60 entries for the Scheme, and awards were given to two schools, a Tidy Towns committee and an Individual Award to one person. It is hoped to run a similar scheme in 2008.

The protection of the County's environment is a priority for all residents and visitors to Kerry and the members of the SPC will continue to work to ensure that this is achieved.

Membership

<i>Councillors</i>	<i>Sectors Represented</i>	<i>Representatives</i>
Cllr Bobby O'Connell (Chair)	Community / Voluntary Forum	Mr Paudie Casey
Cllr Johnny O'Connor	Environmental / Conservation	Mr Seamus Roche
Cllr Breandán MacGearailt	Development / Construction	Mr Donnacha Galvin
Cllr Michael Gleeson	Agriculture / Farming	Mr Conor Creedon
Cllr Tom Fleming		
Cllr Denis Stack	Listowel Town Council	

REPORT ON CORPORATE POLICY GROUP & STRATEGIC POLICY COMMITTEES



Planning SPC

Report by Cllr Terry O'Brien (Chair)

The Planning and Economic Development SPC met on five occasions, with the review of the telecommunications policy forming the main body of work.

During the year, Cllr Terry O'Brien took over the Chair of the committee, replacing Cllr Brendan Cronin. Cllr Cronin was thanked for the service he gave the committee during his time as Chair.

Two special meetings were held, one with officials from the Department of Communications who made representations to the Committee on their role in the Department and the role of Com Reg. the National Regulatory Authority with responsibility for the regulation of the electronic communications sector.

Representatives of the telecommunications industry attended a subsequent meeting.

Other issues discussed were the sequential testing for zoning in urban areas and also the consideration of a draft policy for Taking in Charge of housing estates.

Membership

<i>Councillors</i>	<i>Sectors Represented</i>	<i>Representatives</i>
Cllr. Terry O'Brien (Chair)	Environment/ Conservation	Ms. Catherine McMullin
Cllr. John Brassil	Trade Union	Mr. Patrick J. Cronin
Cllr. Michael Healy-Rae	Agriculture/ Farming	Mr. Flor McCarthy
Cllr. Seamus Fitzgerald	Business/ Commercial	Ms Caroline McEnery
Cllr. Brendan Cronin		
Cllr. Ted Fitzgerald		
Cllr. Brian O'Leary	Killarney Town Council	

REPORT ON CORPORATE POLICY GROUP & STRATEGIC POLICY COMMITTEES



Housing and Social Support SPC

Report by Cllr Colin Millar (Chair)

The Housing & Social Support SPC met on four occasions in 2007. I would like to pay tribute to Cllr Danny Healy Rae in his role as Chairman of this SPC since 2004 and who I replaced in the middle of 2007.

During the year the Committee dealt with the following important matters:

- ☆ Provision of Community Facilities in Local Authority Estates
- ☆ Policy on the implementation of Low Cost Sites Scheme
- ☆ Role of Voluntary Housing Associations in relation to meeting Part V Requirement
- ☆ Heating options in local authority housing schemes
- ☆ Developing a best practice model of integrated accommodation and services for the older person
- ☆ Policy on assessing housing need in respect of separated & divorced housing applicants
- ☆ Criteria used in determining layout & design of Social & Affordable Housing units under Part V of Planning & Development Act 2000
- ☆ Input into the development of a revised Kerry Local Authorities Tenants Handbook
- ☆ Developing a policy on regularising tenancies
- ☆ Control of Dogs in Local Authority Estates
- ☆ Housing Adaptation Grant Schemes for Older People and People with a Disability
- ☆ Review of the 2005-2008 Traveller Accommodation Programme
- ☆ Interagency Traveller Strategy
- ☆ Homelessness – Review of Government's National Strategy
- ☆ New approach to assessing housing need
- ☆ 2007 Housing Capital Allocation
- ☆ Update on Part V Planning & Development Act 2000
- ☆ DoEHLG's new housing policy statement: - *Delivering Homes, Sustaining Communities*.
- ☆ Rent Assessment Scheme
- ☆ Update on provision of Voluntary & Co-operative Housing

REPORT ON CORPORATE POLICY GROUP & STRATEGIC POLICY COMMITTEES

Membership

<i>Councillors</i>	<i>Sectors Represented</i>	<i>Representatives</i>
Cllr. Colin Miller (Chair)	Community/ Voluntary	Mr. William Morrell
Cllr. Tim Buckley	Community/ Voluntary	Ms. Eileen Mayse
Cllr. Michael Cahill	Community/ Voluntary	Ms. Cáit O'Coileáin
Cllr. Toiréasa Ferris	Development/ Construction	Mr. Martin Walsh
Cllr. Danny Healy-Rae		
Cllr. Paul O'Donoghue		
Cllr. Karen Tobin,	Tralee Town Council	
Cllr. Tom Walsh,	Listowel Town Council	

REPORT ON CORPORATE POLICY GROUP & STRATEGIC POLICY COMMITTEES



Community, Culture and Tourism SPC

Report by Cllr Robert Beasley (Chair)

The Community, Culture & Tourism SPC met on four occasions during 2007:

- ☆ 8th February, 2007
- ☆ 28th March, 2007
- ☆ 10th September, 2007
- ☆ 20th November, 2007

Matters dealt with included:

- ☆ Library Capital Works Programme
- ☆ Formulation of new Kerry Arts Plan 2007-2012
- ☆ Work Programme to Prioritise:
 - ☆ Community Safety
 - ☆ Community Development
 - ☆ Playgrounds
- ☆ Review of the Library Development Plan 2002-2006 and setting out timeframe for new Plan 2007-2011
- ☆ Presentations were given on the Library Development Plan
- ☆ Archaeological and Heritage projects were discussed

Membership

<i>Councillors</i>	<i>Sectors Represented</i>	<i>Representatives</i>
Cllr. Robert Beasley (Chair)	Community/ Voluntary	Ms. Mairead Lynch
Cllr. Norma Foley	Community/ Voluntary	Mr. John O'Sullivan
Cllr. John Sheahan	Trade Union	Mr. Andrew McCarthy
Cllr. Pat McCarthy	Business/ Commercial	Vacant
Cllr. Niall O'Callaghan,	Killarney Town Council	

MEMBERSHIP OF BOARDS / COMMITTEES 2007

<i>South West Regional Authority</i>	<i>South and Eastern Regional Assembly</i>	<i>Meitheal Forbartha na Gaeltachta Teoranta</i>	<i>Partnership Trá Lí</i>
Cllr. Michael Connor-Scarteen	Cllr. Paul O'Donoghue	Cllr. Breandán MacGearailt	Cllr. Toiréasa Ferris
Cllr. Seamus Fitzgerald	Cllr. Michael Cahill		
Cllr. Pat Leahy			
Cllr. Michael O'Shea			
Cllr. Robert Beasley			
Cllr. Paul O'Donoghue			
		<i>South Kerry Development Partnership Ltd.</i>	<i>Tuatha Chiarraí</i>
		Cllr. Colin Miller	Cllr. Ted Fitzgerald
		Cllr. Johnny O'Connor	Cllr. Norma Foley
		<i>Jeanie Johnston (Ireland) Ltd.</i>	<i>Sliabh Luachra Rural Development Ltd.</i>
		Cllr. Paul O'Donoghue	Cllr. Tom Fleming
		Cllr. John Sheahan	
<i>Association of City and County Councils</i>	<i>North Kerry Together Ltd.</i>		
Cllr. Tim Buckley	Cllr. Dan Kiely		
Cllr. John Brassil	Cllr. Robert Beasley		
Cllr. Michael O'Shea			
		<i>Southern Regional Drugs Task Force</i>	<i>Governing Body of National University of Ireland, Cork.</i>
		Cllr. Tom Fleming	Cllr. Breandán MacGearailt
<i>Irish Public Bodies Mutual Insurances Ltd.</i>	<i>Local Authority Members Association</i>		
Cllr. Michael O'Shea	Cllr. Michael Cahill		

MEMBERSHIP OF BOARDS / COMMITTEES 2007

Kerry Airport Plc	Tralee Regional Sports and Leisure Company Ltd.	Tralee Bay Oyster Fisheries Society Ltd.	An Daingean Harbour Commissioners
Cllr. Anne McEllistrim	Cllr. Anne McEllistrim	Cllr. Norma Foley	Elected Members
			Cllr. Seamus Fitzgerald
			Cllr. Breandán MacGearailt
			Non-elected members
			Dr. Finbar O'Shea
			Mr. Timothy O'Sullivan
Tralee and Fenit Harbour Commissioners	Kerry County Enterprise Board Ltd.		
Cllr. Toiréasa Ferris	Cllr. Pat McCarthy		
Non-elected member	Cllr. Anne McEllistrim		
Mr. Christy Lynch	Cllr. Norma Foley		
	Cllr. Toiréasa Ferris		
Kerry County Rural Water Committee	Local Traveller Accommodation Consultative Committee	Killarney National Park Liaison Committee	IRD Duhallow
Cllr. John Sheahan	Cllr. Terry O'Brien	Cllr. Colin Miller	Cllr. John Sheahan
Cllr. Liam Purtill	Cllr. Toiréasa Ferris		
Cllr. Anne McEllistrim	Cllr. Tom Fleming		
Cllr. Michael Cahill	Cllr. Ted Fitzgerald		
Cllr. Michael O'Shea			
Cllr. Ted Fitzgerald			
		South West River Basin District Advisory Council	Shannon Basin River District Advisory Council
		Cllr. Ted Fitzgerald	Cllr. Dan Kiely
		Cllr. Johnny O'Connor	
		Cllr. Pat Leahy	

MEMBERSHIP OF BOARDS / COMMITTEES 2007

<i>Regional Health Forum – South</i>	<i>Audit Committee</i>	<i>Joint Policing Committee</i>	<i>Kerry Education Service</i>
Cllr. John Sheahan	Cllr. Liam Purtill	Mayor Michael Healy-Rae – Chair	<i>Elected Members</i> Cllr. Ted Fitzgerald Cllr. Dan Kiely Cllr. Breandán MacGearailt Cllr. Tom Fleming Cllr. Toiréasa Ferris Cllr. John Sheahan Cllr. Tim Buckley Cllr. Bobby O’Connell Cllr. Terry O’Brien
Cllr. Brendan Cronin	Cllr. Michael O’Shea	County Councillors	
Cllr. Tom Fleming	<i>External Members</i>	An Daingean E.A. Cllr. Michael O’Shea Cllr. Seamus Fitzgerald	
Cllr. Michael Cahill	Mr. Aidan Horan	Killorglin E.A. Cllr. Michael Cahill Cllr. Johnny O’Connor Cllr. Michael Connor-Scarteen	<i>Non-elected members</i> Ms. Kathleen Browne Ms. Margaret Broderick Mr. Teddy Healy Mr. Leonard Hurley
Cllr. Michael Healy-Rae	Dr. Clare Rigg	Killarney E.A. Cllr. Danny Healy-Rae Cllr. John Sheahan Cllr. Brendan Cronin	
	Mr. Gene Boyd	Listowel E.A. Cllr. Liam Purtill Cllr. Dan Kiely Cllr. Pat Leahy	
		Tralee E.A. Cllr. Anne McEllistrim Cllr. Toireasa Ferris Cllr. Pat McCarthy	
		Oireachtas Members Martin Ferris T.D. Senator Paul Coghlan Thomas McEllistrim T.D. Jackie Healy-Rae T.D. John O’Donoghue T.D.	
		Community and Voluntary Members Mr. Bill Morrell Mr. Sean Quinlan Mr. John O’Sullivan	

MEMBERSHIP OF BOARDS / COMMITTEES 2007

<i>Joint Policing Committee</i>	<i>Kerry Education Service</i>
Garda Síochána Members Chief Superintendent Liam Hayes A.N. Other Superintendent	
Kerry Council Council Executive Members Mr. Tom Curran, County Manager Mr. John Breen, Director of Housing, Community & Enterprise	

CONFERENCES ATTENDED BY COUNCILLORS IN 2007



<i>Conference/Event</i>	<i>Location</i>	<i>No. of councillors who attended</i>
2007 Non-National Roads Programme Launch	Bray, Co. Wicklow	1
Local Authority Members Association Awards	Dublin	4
Launch of brochure 'Welcome to Kerry Let's Do Business'	Dublin	2
Cumann Merriman	Cathair na Mart, Co. Mhaigh Eo	2
High Performance Organisations – A Key To Social Change	Dublin	1
Northern Tourism Conference	Dunadry, Antrim	15
AMAI Spring Seminar	Tralee	6
Mid West Regional Authority 13 th Annual Conference	Adare, Co. Limerick	2
TJK Planning Seminar for Councillors	Tralee	1
Green Fáilte Awards	Adare, Co. Limerick	2
Wicklow Tourism Conference	Newtownmountkennedy, Co. Wicklow	6
Colmcille Winter School	Gartan, Churchill, Co. Donegal	10
The Role of Local Authorities in Building Peace and Reconciliation	Dundalk, Co. Louth	1
Rural and Regional Development	Killybegs, Co. Donegal	7
Association of County & City Councils Annual Conference	Dungarvan, Co. Waterford	9
Safe Driving Conference	Ennis, Co. Clare	1
Kerry Environment Conference	Ballybunion, Co. Kerry	8
Tourism – Fostering Local and Regional Regeneration	Carlow	9
Enforcement of Environmental Regulations	Carrigaline, Co. Cork	1
Local Authority Members Association Spring Conference	Killarney, Co. Kerry	14

CONFERENCES ATTENDED BY COUNCILLORS IN 2007

<i>Conference/Event</i>	<i>Location</i>	<i>No. of councillors who attended</i>
Planning Seminar	Killarney, Co. Kerry	5
IPI Annual Conference	Kilkenny	1
Regional Governance	Naas, Co. Kildare	4
Library Association of Ireland Joint Conference	Portlaoise, Co. Laois	1
Local Government Housing Service Conf.	Letterkenny, Co. Donegal	8
GROW Conference	Letterkenny, Co. Donegal	1
All Ireland Nuclear Free Local Authorities Forum Seminar	Newry, Co. Down	2
Effective Communications for Councillors	Castlebellingham, Co. Louth	1
Renewable Energy- A Role for the Regions	Carlingford, Co. Louth	8
Your Place or Mine Conference – Place The Link to Investment	Dublin	3
Synge Summer School 2007	Rathdrum, Co. Wicklow	5
The Local Government Planning Service	Baltimore, Cork	8
MacGill Summer School 2007	Glenties, Co. Donegal	2
Joe Mooney Summer School	Drumshambo, Co. Leitrim	1
John McGahern Seminar & Summer School	Mohill, Co. Leitrim	1
IRD Duhallow AGM	Newmarket, Co. Cork	1
William Carlton Summer School	Clogher, Co. Tyrone	1
Parnell Summer School	Rathdrum, Co. Wicklow	11
Merriman Summer School	Lisdoonvarna, Co. Clare	6
Humbert Summer School	Ballina, Co. Mayo	12

CONFERENCES ATTENDED BY COUNCILLORS IN 2007

<i>Conference/Event</i>	<i>Location</i>	<i>No. of councillors who attended</i>
Preventing Suicide across the Lifespan	Killarney, Co. Kerry	1
Environment Conference 2007	Dublin	1
Rural Tourism 2007 – 2013	Kilkee, Co. Clare	2
Developing Local Heritage for Tourism Purposes	Listowel, Co. Kerry	4
Association of Municipal Authorities of Ireland Conference 2007	New Ross, Co. Wexford	8
Local Government & Rural Development	Tullamore, Co. Offaly	2
Waste Management Conference	Dublin	1
Irish Ports Association National Conf.	Killiney, Co. Dublin	1
Kerry Life Education Ltd. Conference	Killarney, Co. Kerry	4
NASC Conference	Cork	2
Women's Aid Conference	Dublin	1
2007 Planning & Design for Heritage and Development Projects, Policies & Practice	Dun Laoghaire, Co. Dublin	1
Great Blasket Commemoration 2007	Dun Chaoin, Co. Chiarraí	1
TJK Planning Seminars for Councillors	Tralee, Co. Kerry	1
E-Town National Conference	Tarbert, Co. Kerry	1
Volvo Environmental Conference	Cork	1
The Challenge of Climate Change for the Island of Ireland	Killarney, Co. Kerry	1
EU Town Twinning Conference	Downpatrick, Co. Down	2
Active Citizenship Conference	Dublin	2
Disability Federation of Ireland Conference	Dublin	1

CONFERENCES ATTENDED BY COUNCILLORS IN 2007

<i>Conference/Event</i>	<i>Location</i>	<i>No. of councillors who attended</i>
Dr. Douglas Hyde Conference	Ballaghaderreen, Co. Roscommon	5
Tracking the Tiger – A Decade of Change	Ennis, Co. Clare	3
Energy Security & Climate Change	Dublin	1
Local Authority Members Association Annual Winter Conference	Carlow	11
E-Towns – Beyond 2007	Tarbert, Co. Kerry	1
Effective Communications for Councillors	Letterkenny, Co. Donegal	1
Tourism for Changing Lifestyles	Ennistymon, Co. Clare	8
Neil T. Blaney Winter School	Letterkenny, Co. Donegal	2
The Local Government Budget 2008	Bunclody, Co. Wexford	2
Community Action on Alcohol	Dublin	2
Tackling Poverty and Social Need in Ireland – North and South	Enniskillen, Co. Fermanagh	4
9 th Irish and UK Local Authorities Conference on Nuclear Hazards	Dublin	5
Combat Poverty Conference	Dublin	1
Alternative Enterprise & Sustaining Rural Economy	Moycullen, Co. Galway	1
Island of Ireland Peace Park Conference	Belgium	1
NASC EU Briefing Programme	Brussels	1
St. Patrick's Day Parade	New York	1

Conferences/ Events attended outside the state

The total payment by Kerry County Council in respect of attendance, authorised by the authority, at a meeting of a prescribed association of local authorities of which the authority is a member, and attendance, authorised by the authority, at a conference, seminar or other meeting or event was €163,433 in 2007. The total amount of this payment which related to travel and subsistence expenses within the State was €158,397 and €5,036 outside the State. The total payment by the Council in respect of the councillors Annual Expenses Allowance and the allowances for non-members of committees was €209,076 in 2007.

Section 2

DIRECTOR'S OPERATIONAL REPORT ON HOUSING & SOCIAL SUPPORT



Director of Services: John Breen
Senior Staff: Senior Executive Officer: Liam Quinlan

“Kerry County Council’s Housing Department advanced the construction and management of social and affordable housing in the county during 2007 in a manner which continues to promote social inclusion and sustainable communities.”

The activities of Kerry County Council’s Housing Department continues to be of critical importance in helping many families throughout the county to rent or buy a home suitable to their needs, when they are unable to do so from their own resources.

While house prices have moderated over the last year the cost of privately renting or buying a home in the county continues to be beyond the reach of many households.

In 2007, Kerry County Council, through their Housing Department, assisted 374 new households in meeting their housing needs, either by direct provision of social housing or through the Rental Accommodation Scheme.

A further 65 dwellings were completed by the Voluntary and Co-operative Housing sector with grant assistance and support provided by Kerry County Council.

On the affordable housing front a further 80 households availed of the various housing options offered by Kerry County Council, to become first time home owners in 2007.

Housing schemes completed in 2007

Location	Number of units
Ballylongford	8
Cahirciveen	10
Causeway	20
Fenit	3
Kenmare	22
Killorglin	12
Knocknagoshel	6
Lixnaw	22
Moyvane	2
Rathmore	4
Waterville	6
Single rural dwellings	8
Total	123

DIRECTOR'S OPERATIONAL REPORT ON HOUSING & SOCIAL SUPPORT

Housing schemes under construction at the end of 2007

Location	Number of units
Ardfert	25
Ballyheigue	25
Ballygologue, Listowel	30
Castlegregory	2
Castleisland	14
An Daingean (Cappa and Emlagh)	9
Kilgarvan	4
Portmagee	5
Tarbert	8
Single rural dwellings	5
Total	127

Affordable Housing

- ☆ 42 affordable houses completed in 2007
- ☆ 34 affordable houses under construction at end of 2007
- ☆ Council started construction of 10 affordable houses on Council lands in Ardfert
- ☆ Six serviced sites sold to eligible applicants in Cahirciveen
- ☆ 54 Council dwellings sold under Tenant Purchase Schemes, with discounts of up to 30% of market value.
- ☆ Five houses sold under Shared Ownership Scheme.

Rental Accommodation Scheme

Following its commencement in the middle of 2006 an additional 148 tenants transferred onto the Rental Accommodation Scheme and 389 cases were investigated in 2007.

The RAS Unit operates the scheme on behalf of all the Kerry local authorities, sourcing private accommodation and entering into contractual agreements with private landlords to let their rental properties to eligible households with a long term housing need.

At present, approximately 1,800 clients benefit from rent supplement in the County. Approximately 913 have been in receipt of rent supplement for more than 18 months, which is the initial target group for the RAS Unit.

*DIRECTOR'S OPERATIONAL REPORT ON HOUSING & SOCIAL SUPPORT***The Housing Adaptation Grant Schemes for Older People and People with a Disability**

These schemes became operational from 01/11/07 and replaced the Disabled Persons Grant Scheme and the Essential Repairs Grant Scheme.

- ☆ 544 private households received grant assistance under these Grant Schemes.
- ☆ 113 Council Tenants availed of various other housing measures such as disabled adaptations, central heating scheme and bedroom extensions.

Voluntary Housing Schemes Completed in 2007

Clúid Housing Association	13 Houses at Brackloon, Annascaul
Clúid Housing Association	4 Houses in Sneem
Respond Housing Association	34 Houses in Listowel.
NABCO (Part V)	14 houses at Kenmare
Total Completed	65

Internal Capital Receipts Works Programme

From the start of 2007 the Department of Environment, Heritage and Local Government advised that it was giving direct control to local authorities over the spending of their internal capital receipts from the sale of council houses to existing tenants.

These monies are to be used primarily for planned maintenance, improvements in the housing stock and estate re-generation.

Voluntary Housing

Kerry County Councils continues to support Voluntary Bodies in providing accommodation for elderly, disabled or homeless persons with the aid of the Capital Assistance Scheme and family type accommodation with the aid of the Capital Loan and Subsidy Scheme.

The Council fully recognises their role in developing Social Housing in the county. The following schemes were either completed or under construction at the end of the year:-

Voluntary Housing Schemes under Construction at the end of '07

Clúid Housing Association	5 units (house purchase) at Manor
St. John of God Trust	5 units at Oakview, Tralee
Cahirciveen Social Services	10 units at Cahirciveen
Clúid Housing Association	9 units at Holy Cross, Killarney
Cara Housing Association	38 units at Kenmare
Respond Housing Association	20 houses at Marconi, Ballybunion
Clúid Housing Association	3 units (house purchase) Tralee.
Irish Society for Autism	11 units (house purchase), Tralee
Total under construction	101

DIRECTOR'S OPERATIONAL REPORT ON HOUSING & SOCIAL SUPPORT

Key Performances

- ☆ 2,202 rented dwellings managed and maintained by the Housing Department
- ☆ Expenditure on Housing Construction and Acquisition Programme: €18.1 million
- ☆ Construction of 123 social housing units completed
- ☆ 127 units under construction at the end of 2007
- ☆ 226 new households directly provided with Council Housing
- ☆ A further 148 new tenants previously in receipt of rent supplement transferred onto Rental Accommodation Scheme, and 389 cases were investigated
- ☆ Acquired 36 acres of land throughout the county over past two years
- ☆ Construction started on 30 unit project in Ballyheigue, part of a joint venture between Council and private developer
- ☆ Expenditure of an additional €1.071 million on planned maintenance of 148 group scheme houses and €0.284 million on estate re-generation in 11 council estates- all out of internal capital receipts.
- ☆ Expenditure of €0.71 million on remedial works to 113 single rural council dwellings utilising internal capital receipts with matching exchequer funding.
- ☆ Paid out 334 Disabled Persons Grants averaging €7,200 per grant
- ☆ Carried out disabled adaptations to 39 Council Houses at an average cost of €6,277 per house.
- ☆ Paid out 210 Essential Repair Grants averaging €5,162 per grant
- ☆ Central heating installed in an additional 70 Council properties. Central heating installation programme in council houses now almost complete
- ☆ 65 dwellings were completed by the Voluntary and Co-operative Housing sector with grant assistance and support provided by Kerry County Council's Housing Department.
- ☆ Sold 54 council houses to tenants under Tenant Purchase Scheme.

DIRECTOR'S OPERATIONAL REPORT ON ROADS, TRANSPORTATION AND SAFETY



Director of Services: Charlie O'Sullivan

Senior Staff: Senior Engineer – Transport Network Operations: Ger MacNamara

Senior Engineer – Kerry National Road Design Office: Matt Corridan

“It is our aim to have a modern, safe and sustainable road network which benefits the people, both local and visitor, the economy and the environment and which actively contributes to social inclusion and quality of life”

The Directorate consists of four business units, the Kerry National Road Design Office (KNRDO), the Transport Network Operations section, the Motor Taxation Office and the Health & Safety section.

The KNRDO and the Transport Network Operations unit are primarily responsible for the delivery of a modern, safe and sustainable road infrastructure to support the future growth and economic development of the county, as well as managing Council operated piers and harbours.

The Motor Taxation Office administers the issuing of 129,000 vehicle licensing transactions and 20,000 Driver licence transactions annually on behalf of the Department of Transport.

The Health & Safety section has corporate responsibility for the development and implementation of measures to protect the safety of employees, contractors on our sites, users of our facilities and the general public.

The road network comprises of 96km of National Primary Roads and 336km of National Secondary Roads linking the major towns in the county to the Tralee – Killarney Hub and the national gateways and hubs.

The 4,281km of Non-National Roads is critical to the social fabric of the county, serving the needs of our predominant rural communities. The continued sustainable growth of the county, particularly for industrial, agricultural, tourism and community development is contingent on developing and maintaining this network.

In 2007, over €52 million was invested in the planning, design, development and maintenance of our 4,713 km road network, with improvements carried out to almost 200km of road.

The Council received record funding of €30.7m for investment on our local and regional roads, compared to a grant allocation of €20.6m in 2006. This increased funding allowed for the substantial completion of 87% of the 2006 -2008 Road Restoration Programme by the end of 2007. A new three year programme was adopted by Council at its October meeting.

The Kerry National Roads Development Office (KNRDO) was established in 1993 in conjunction with the National Roads Authority, and has overseen the improvement of over 60km of the 96km of National Primary Roads in Kerry.

Plans are well advanced for the remaining sections of this network with a view towards upgrading the entire National Primary Network in Kerry during the lifetime of the current National Development Plan.

The Council commenced the process of acquiring land for the construction of the N21 Castleisland By-Pass in 2007 and it is proposed to go to tender for the construction of this scheme in 2008.

The preferred route for the extension of the N22 Tralee By-Pass by a further 3.5 km to the north of the existing scheme at Leath was published in November. This will now allow for the publication of the Compulsory Purchase Order (CPO) and Environmental Impact Study for this scheme during 2008.

DIRECTOR'S OPERATIONAL REPORT ON ROADS, TRANSPORTATION & SAFETY

The office also advanced design on the N23 Castleisland-Farranfore road, the N69 Listowel By-Pass, the N70 from Coolnaharragill Lower to Coolroe Lower and Phase III of the Tralee Western Ring Road.

Since 2004 major improvement and re-alignment works have been carried out on approximately one-third of the National Secondary Road network in Kerry, at a cost of €31m. In 2007, €10.3 million was spent on continuing pavement improvements to 21.3 km of the network, with major re-alignment works taking place on a 1.9 km stretch of the N69 (Tralee – Listowel Road), between Leath Cross and Pope's Cross, and on the N70 at Kells.

A further €3m was spent on other improvement works, which included surface dressing 8.6 km of road as well as strengthening and widening nine bridges and safety works at 12 locations.

Kerry County Council's direct labour force completed improvements on a record 129 Local Improvement Schemes during the year at a cost of over €3 million. Grant aid was received from the Department of the Environment, Heritage and Local Government and the Department of Community Rural and Gaeltacht Affairs. This scheme is primarily for local tertiary roads with some local funding being provided by the community.

The tender for the redevelopment of Knightstown Harbour was awarded in 2007 and on-site works will be advanced in 2008. The CPO documentation for the access road to the proposed Cromane Pier was finalised and will be submitted to An Bord Pleanála in early 2008.

Over 60,000 vehicles were registered in County Kerry in 2007, with over €31 million collected from motor tax. The Council promoted the availability of its on-line services with demonstrations to customers in the motor tax office. This allows customers to tax their cars from the comfort of their own home or through our branch libraries. Over 31% of customer transactions for the taxing of private vehicles were carried out on-line in 2007.

Summary of Key Performances

National Primary Roads (96km)

- ☆ Land acquisition commenced for Castleisland By-Pass
- ☆ Preferred Route for extension to Tralee By-Pass at Leath published in November
- ☆ 2.5km of pavement strengthened on the N22 at Lawlor's Cross
- ☆ Remedial safety measures carried out on the N22 at Coolcaslagh Junction and Leamnaguila
- ☆ 2.5km of roads surface dressed

National Secondary Roads (336km)

- ☆ €13,266,343 spent on National Secondary Roads
- ☆ €10,334,937 spent on Pavement Improvement Works – 21.3km improvement
- ☆ Works completed on 9 bridges
- ☆ 8.6km of roads surface dressed
- ☆ Twelve safety projects completed

Non National Roads (455km of Regional Roads & 3,826km of Local Roads)

- ☆ €30.7m spent on maintenance and improvement of Non-National Roads
- ☆ Safety improvement works carried out at 8 locations
- ☆ Works completed on 3 bridges
- ☆ 129 schemes carried out under the Local Improvement Scheme
- ☆ 8 roads improved under the Community Involvement Scheme
- ☆ 7 level crossings upgraded
- ☆ 3.87% of regional roads surface dressed
- ☆ 3.74% of local roads surface dressed

DIRECTOR'S OPERATIONAL REPORT ON ROADS, TRANSPORTATION & SAFETY

Road Enforcement and Road Safety

- ★ Roads Enforcement Officer investigated approximately 520 complaints e.g. overloaded vehicles, drainage, road openings, road damage, obstruction signs
- ★ Road Safety (Education) Officer appointed

Facilities for Other Road Users

- ★ 64 new public lights erected
- ★ 12 sets of school warning lights erected
- ★ €488,667 spent under the Urban and Village Renewal Scheme. This is the second year of a two year programme and works are now fully complete
- ★ €1,119,418 spent under the CLÁR Village Enhancement Scheme

Piers and Harbours

- ★ Cromane Pier – CPO documentation near completion
- ★ Knightstown Pier – on-site construction works are underway
- ★ Renard Pier – design completed

Coastal Protection

- ★ Inch – coastal protection works complete

Machinery Complex

- ★ Operated efficiently in 2007, with funding set aside for plant replacement.



Legendary Kerry footballer Mick O'Connor shows off his skills at the unveiling of the Kerry Football Sculpture at Clashlehan roundabout, Tralee.



Minister for Environment, Heritage & Local Government, Dick Roche at the official opening of the Bracker O'Regan Road, Tralee with members of the O'Regan family.

DIRECTOR'S OPERATIONAL REPORT ON ENVIRONMENT



Director of Services: Anne Haugh
Senior Staff: Senior Engineer: Denis O'Connor

The activities of the Environmental Services Department continued to grow considerably during 2007, particularly in the areas of environmental enforcement and waste management. Some of the main activities carried out during 2007 are as follows.

Work was completed in 2007 on the last two cells of the existing North Kerry Landfill site located at Muingnaminnane to address Kerry's future waste disposal requirements.

Tenders for the extension to the North Kerry Landfill were advertised towards the end of 2007 with the view to having a contractor on site by the spring of 2008. This extension will have the capacity for one million tonnes of waste. The extension will ensure that landfill capacity is available for the next 17 to 20 years at present intake rates.

A total of 56,784 tonnes of waste was disposed of at the landfill in 2007. This represents a 5.4% decrease in the 2006 figure, and the decrease can be attributed to fluctuations in a competitive waste market.



Mayor of Kerry, Cllr Michael Healy Rae at the contract signing for the closure of the Coolcaslagh Landfill with Denis O'Connor, Senior Engineer Environment Department, Kerry County Council, Charles and James Wills.

Kerry County Council also appointed a contractor to carry out the Coolcaslagh Landfill Closure Contract, in accordance with the conditions of the EPA licence and the Landfill Directive. The contractor began works in October 2007 and the works are due to be completed by the spring of 2008.

A sum of €22,757 was paid to the following groups / organisations from the Landfill / Transfer Station Community Fund for 2007: Kilduff Community Centre, O'Brennan National Scholl, St. Brendan's Community Centre, Clogher Cemetery Committee and Milltown Community Centre

Construction began on An Daingean Civic Amenity site in September 2007. It is expected that this facility will be completed and operational by April 2008.

In keeping with Kerry County Council's policy to encourage recycling of waste, the Council currently operates civic amenity facilities at Muingnaminnane Landfill and the four Transfer Stations, located at Coolcaslagh (Killarney), Milltown, Cahirciveen and Kenmare.

In addition, the number of Bring Bank Sites throughout the County increased by almost 7.6% during 2007. Currently there are 99 sites situated throughout Kerry.

Refuse Collection Service

Despite increased competitiveness in the refuse collection sector, Kerry County Council increased its market share of customers during 2007, which is vital for the survival of the service.

DIRECTOR'S OPERATIONAL REPORT ON ENVIRONMENT

The start of 2007 saw the introduction of the new pre-paid Electronic Pay-Per-Use Service, the first of its kind in the country. Also introduced in 2007 was the collection of dry recyclables by way of wheelie bins. This modernisation has benefited service users, retailers and the council. By focusing on its customers' needs, Kerry County Council aims to retain its customer base and increase it further during 2008.

During 2007, new Regulations were introduced to deal with used vehicle tyres, along with significantly revised Regulations covering waste facility permits and waste collection permits.

In 2007 eight Water Services Plants were upgraded with the installation of high efficiency plant and controls. This has brought about substantial savings in energy costs and also has improved the plant performance and reliability.

Energy monitoring is continuing throughout the organisation, in particular with departments whose services have high energy use, while ongoing improvements are taking place to improve plant performance and reduce operational costs.

The energy programme which is ongoing throughout Kerry Local Authorities under the auspices of Energy Officer, Willie Moynihan and his team, takes in public buildings and the Housing programme,

Both the Killorglin and Castleisland Area Services Centres contain energy efficiency measures, including increased levels of insulation in the building fabrics and glazing, energy efficient lighting, ground source heat pumps linked to under floor heating and a Building Controls and Energy Management System to control and monitor the energy consumption in each section of the facilities.

Air Tightness Testing is now included to guarantee good quality standards in the building construction, especially in the area of air leakage.

All of these works provide significant cost savings and environmental benefits.

Kerry County Council has been carrying out work on the large energy users within the organisation, fitting high-efficiency plant and controls to reduce energy consumption and costs. Most of this work is taking place

in the Water Services Department, as they are the largest consumer of energy within Kerry Local Authorities.

Kerry County Council is presently setting up benchmarks for all services within the organisation in relation to energy consumption and efficiencies.

Kerry County Council continued its enforcement and regulation activities in waste, litter and water quality management areas.

An additional member of staff was appointed to the Environmental Management Team in 2007 and has taken on responsibility for the enforcement of a number of pieces of legislation, including the Kerry County Council Beach Bye-Laws and End-of-Life Vehicle Regulations.

Considerable activity continued in the investigation of and response to littering, illegal dumping and water pollution throughout the County.

Key Performances

- ★ 78 groups took part in the 2007 Spring Clean Campaign throughout Kerry. A total of 33.92 tonnes of hand-picked litter was collected during the campaign from beaches, public parks, roadsides and schools.
- ★ 1,177 environmental complaints were investigated in 2007
- ★ 73 Waste Facility Permits were granted during 2007.
- ★ In excess of 1,500 tonnes of farm plastics collected as part of the national farm plastics take-back scheme.
- ★ 19,296 dog licences issued during 2007 which was the second highest number in the country.
- ★ Blue Flag Award was received in respect of 13 of the County's beaches - Banna, Ballybunion North and South, Ballyheigue, Fenit, Maherabeg, Inch, Ventry, Rossbeigh, Kells, White Strand, Cahirciveen, Ballinskelligs and Derrynane.
- ★ Kerry now has 51 Green Flags in the Green Schools Campaign - during 2007, six new Green Flags were awarded.

DIRECTOR'S OPERATIONAL REPORT ON WATER SERVICE & FIRE SERVICE



Director of Services: Oliver Ring

Senior Staff: Senior Engineer - Water Services Operational: Brian Sweeney; Senior Engineer – Water Services Capital: Fergus Dillon; Chief Fire Officer: Kevin Caffrey

“The provision of effective water and waste water infrastructure forms an essential part of the strategic role of Kerry County Council, and is delivered through capital and revenue programmes.”

Water Services Operational

The cost of providing an adequate supply of water to the people of Kerry, and dealing with waterwaster continues to increase.

In 2007, Kerry County Council produced in excess of 35 million cubic metres of potable water for a population of 115,000 consumers who were served by 44,000 connections. A total of 70 public Water Supply Schemes were administered, 12 waste water treatment plants in the larger towns were operated and treatment facilities were provided in 33 villages throughout the county.

A total of 388 Group Water Schemes are developed in Kerry, and 177 have been taken over and maintained by Kerry County Council. In 2007, Kerry County Council spent €3.2m on taking over new schemes, as well as upgrading existing public water and sewage schemes.

The Water Conservation Project and the Metering Project for non-domestic supplies continued, with specialised leak detection and leak repair teams actively working on the ground. In 2007, a total of 793 leaks were found and repaired, and work is ongoing in the area of mains replacement and rehabilitation and mains pressure management.

In 2007, Kerry County Council spent €437,000 on the maintenance of 29 public conveniences. Two new public conveniences were provided at Castleisland and Killorglin, demountable units were replaced in Cromane and Maharees and opening hours were extended in Inch, Banna and Staigue Fort.

A total of €556,000 was spent on the maintenance and upkeep of the 139 Burial Grounds under the control of Kerry County Council in 2007.

Work commenced on the new burial ground in Lispole and extensions to Finuge and Dun Chaoín Burial Grounds, with the process to provide a new Burial Ground at Baile Uí Bhaoithín started.

Kerry County Council works closely with the 43 Local Burial Ground Committees in relation to the maintenance and upkeep of burial grounds.

Of the County's 139 Burial Grounds, a total of nine are classed as Archaeological sites and protected by the National Monuments Act. Works to be undertaken in these Burial Grounds require advance approval and archaeological supervision. Six Burial Grounds were surveyed in 2007.

DIRECTOR'S OPERATIONAL REPORT ON WATER SERVICE & FIRE SERVICE

Key achievements in the Water Operational Section included

- ☆ 742 water connection applications received
- ☆ 102 waste water connection applications received
- ☆ 69 applications for Well Grants Received
- ☆ Replacement of water mains in Dun Chaoín, Sliabh Glas, Strandsend, Kilsarkan, Barraduff and Rathmore
- ☆ Provision of fluoridation equipment at Lough Guitane and Brosna.
- ☆ Installation of Fire Hydrants near four Primary Schools in the Killarney Electoral Area
- ☆ A 2km long, 150mm diameter water main from Cappamore to Kenmare reservoir to replace 100mm pipe.

DIRECTOR'S OPERATIONAL REPORT ON WATER SERVICE & FIRE SERVICE

Water Capital

The Water Services Capital Works Section is responsible for the provision of water and wastewater infrastructure for the county, including the design of new schemes, and management of these schemes through the construction stage.

The primary source of funding is through the Water Services Investment Programme, and currently has over €50m worth of projects to be started over next three years.

Water Services Capital Key Achievements:

<i>Scheme</i>	<i>Estimated Cost: €m</i>	<i>Commencement Date (on site)</i>
Schemes Substantially completed in 2007		
North Ardfert Water Supply Source Protection	0.45	2007
Schemes Commenced Construction in 2007		
Waterville Water Supply and Sewerage	20.0	2007
Barraduff Sewerage Scheme	2.2	2007
Kilcummin Sewerage Scheme	2.6	2007
Milltown Sewerage Scheme	3.9	2007
Firies Sewerage Scheme	2.4	2007
Sneem Sewerage Scheme	3.5	2007
Schemes Tendered for construction in 2007		
Kenmare Water Supply Scheme	11.6	2008
Central Regional Water Supply Scheme (Chlorine Dioxide Plant)	0.45	2008

DIRECTOR'S OPERATIONAL REPORT ON WATER SERVICE & FIRE SERVICE

Water Services Capital Key Achievements:		
<i>Scheme</i>	<i>Estimated Cost: €m</i>	<i>Commencement Date (on site)</i>
Contract Documents commenced in 2007		
Central Regional Water Supply Scheme (Treatment)	16.0	2009
Central Regional Water Supply Scheme (Reservoirs)	14.0	2009
Preliminary Reports completed in 2007		
Kenmare Sewerage Scheme	11.6	2009/2010
Village Sewerage Schemes Abbeydorney, Ardfert, Caherdaniel Castlemaine, Fenit, Glenbeigh, Kilflynn, Kilgarvan, Lixnaw, Tarbert	24.5	2009

DIRECTOR'S OPERATIONAL REPORT ON WATER SERVICE & FIRE SERVICE

Fire Service

The Fire Service Fleet continued to be upgraded in 2007. During the year Kerry Fire Service took delivery of one new Class B Water Tender, a new four-wheel drive vehicle and also a new mechanics vehicle. In addition, the fleet was also strengthened by the addition of a Water Tanker and Bronto Sky Lift Hydraulic Platform.

A specialised vehicle for Road Traffic Accidents is due for delivery in early 2008.

On the buildings front, the extension and refurbishment of Tralee Fire Station was completed in May 2007.

Planning permission for the proposed new Fire Station in Kenmare was granted and it is expected to go to tender for construction in 2008.

The Fire Service Change Programme continued to be rolled out in 2007 through the primary schools programme. This involves basic fire safety instruction being provided by fire service personnel to third class primary students. To date a total of 18 schools have received the fire safety instruction.

Key Performances

- ☆ The Brigade was mobilised on 1,338 occasions during 2007.
- ☆ Gorse fires, chimney fires and road traffic accidents were the major incident types requiring brigade mobilisation.
- ☆ 312 Fire Safety Certificates were granted.
- ☆ Cost of running the Fire Service was €5.7m for the year 2007.

DIRECTOR'S OPERATIONAL REPORT ON WATER SERVICE & FIRE SERVICE

Building Control

The Building Control Section received 1,573 Commencement Notices in 2007, comprising some 2,654 buildings notified. Officers inspected 25.32% of buildings notified.

The Building Control Section continues to promote greater awareness of the Building Regulations by:

- ★ Ensuring a visible presence on building sites, with a good geographical spread.
- ★ The issuing of letters to the public, drawing attention to their requirements under the Building Control Legislation.
- ★ Two technical bulletins were circulated to designers and builders in 2007

Kerry Civil Defence

Civil Defence volunteers work under the direction of Kerry County Council's Civil Defence Officer, and are trained in various skills such as first aid, rescue, emergency feeding, evacuee care, communications, land / water search and radiation monitoring.

There are approximately 180 active members throughout Kerry and Kerry Civil Defence has 17 qualified Instructors to teach various disciplines across the organisation.

During 2007, Kerry Civil Defence Officer Michael Forrest retired after 28 years service, and was honoured by the Service. Also in 2007 the Boat Section was relaunched

Key Performances

- ★ Hosted the National Civil Defence Officers Educational and Training Conference in Tralee
- ★ The Civil Defence Board launched the Strategic Plan 2007 to 2010.
- ★ New working dress introduced for members.
- ★ First Aid and Ambulance activity at 90 different Events in the County, including Listowel Races, Tralee Races, Tour of Ireland Cycle race, Rallies, Puck Fair and the Festival of Kerry.
- ★ 50 new recruits enrolled in Killarney and Tralee.
- ★ Trained and qualified over 50 employees of Kerry County Council in Occupational first aid.
- ★ Re-launched the Boat section of Kerry Civil Defence and held Open Day to recruit new members into the Boat Section. A total of 32 new members were enrolled.

DIRECTOR'S OPERATIONAL REPORT ON PLANNING & SUSTAINABLE DEVELOPMENT



Director of Services: Michael McMahon

Senior Staff: Senior Executive Officer: Joan McCarthy; Senior Engineer- Development Management: Paul Stack; Senior Engineer- Forward Planning: Tom Sheehy

"The County Development Plan is an important document which guides the development of the county, by providing a framework by which housing, transport, infrastructure, social facilities and many more services are developed"

Forward Planning

The preparation, monitoring and implementation of the County Development Plan and Local Area Plans is the responsibility of the Forward Planning Unit.

The Review of the current County Development Plan commenced in November 2007 with the publication of the Issues Report. The review process starts four years after the adoption of the last plan and can continue for two years.

Also in 2007 we saw a continuation of the process of preparing and adopting Local Area Plans for the 87 settlements listed in the settlement hierarchy of the current County Development Plan. We are currently in the process of adopting the last six of these Plans.

While the statutory period for these Local Area Plans is for a period of six years, it is considered that the strategy outlined for the development of the settlements will cover a more extended timeframe.

These plans will ensure co-ordinated and efficient development of these settlements and avoid inappropriate development, which may prejudice their development in accordance with proper planning and sustainable development principles.

Development Management

The most significant element of the work of the Planning and Economic Development section has been, and for the moment continues to be, the processing of planning applications.

The year 2007 saw another very busy period for Development Management with 4,424 planning applications received, representing a decrease of 4% on the previous year.

The first application under the Strategic Infrastructure Act was received from An Bord Pleanála for consideration by the Planning Authority in September 2007. This related to the development of a Liquefied Natural Gas Regasification Terminal at Kilcolgan Lower, Tarbert.

The Strategic Infrastructure Act requires that the Local Authority where the proposed development is located, submits a report to An Bord Pleanála outlining the views of the

Manager, the Local Authority and of individual members.

Kerry County Council considered the application and was supportive of the proposed development. A decision by An Bord Pleanála on this development is expected in March 2008.

DIRECTOR'S OPERATIONAL REPORT ON PLANNING & SUSTAINABLE DEVELOPMENT

Architectural Conservation

By the end of 2007 there were 478 entries in the Record of Protected Structures maintained by this planning authority.

There were 22 applications for financial assistance under the provisions of the Conservation Grant Scheme for Protected Structures. A total of 22 Certificates of Provisional Approval were issued and by the end of the year 22 payments, with a combined value of almost €143,000, had been made.

In June 2007, the Mayor of Kerry, Cllr. Ted Fitzgerald launched the Kerry Design and Conservation Awards Scheme in the Kerry County Council Area Offices in Killorglin. The objectives of the scheme are to raise

public awareness of good design and conservation and to foster and reward excellence and best practice in the construction environment. Submissions were invited in six categories.

An independent judging panel visited all the entries. The assessment criteria included contribution to the quality of the built environment and the quality of the design and workmanship.

Overall winner in the Commercial Category was the Solas Building, Institute of Technology, Tralee, designed by architects Carr, Cotter and Naessens, Cork and contractors for the project were MacNamara Construction Ltd.



"The Solas Building at the Institute of Technology, Tralee's North Campus in Dromthackar was awarded the overall prize at the inaugural Kerry County Council Design & Conservation Awards. Included in the picture are Gary Browne, Head of Department, Nursing & Health Care Studies, Institute of Technology, Tralee, Mayor of Kerry, Cllr Michael Healy Rae, Joan McCarthy, SEO Planning, Kerry County Council and Michael McMahon, Director of Planning & Sustainable Development, Kerry County Council.

*DIRECTOR'S OPERATIONAL REPORT ON PLANNING & SUSTAINABLE DEVELOPMENT***Planning Enforcement**

<i>Category</i>	<i>Number</i>	<i>Comments</i>
Total number of cases subject to complaints that were investigated	447	This figure represents all written complaints received by the Planning Authority as well as internally identified complaints
Total number of cases subject to complaints that were dismissed	151	This figure represents cases where no Warning Letter or Enforcement Notice was issued as the case was classified as minor or trivial in nature, exempt or the developer had not breached a condition of planning permission
Total number of cases subject to complaints that were resolved through negotiations	210	This figure is made up of retention applications that were granted or the developer undertook the required works
Number of enforcement procedures taken through warning letters	132	This figure represents all the Warning Letters served under the Section 152 of the Planning and Development Act 2000
Number of enforcement procedures taken through enforcement notices	146	This figure represents all the Enforcement Notices served under Section 154 of the Planning and Development Act 2000
Number of prosecutions	31	This figure represents all the Prosecutions taken in 2007 under Section 157 and Injunctions issued under Section 160 of the Planning and Development Act 2000

DIRECTOR'S OPERATIONAL REPORT ON COMMUNITY & ENTERPRISE, CULTURE, HERITAGE & RECREATION



Director of Services: John Breen

Senior Staff: Senior Executive Officer: Carmel Brosnan; County Librarian: Tommy O'Connor

Community & Enterprise continues to develop a wide range of work programmes to facilitate the social, cultural, amenity and economic development of the County. The objectives of social inclusion, integration and sustainability underpin each strategy.

In January 2007, the Kerry Enterprise Action Team (KEAT) launched a marketing brochure, entitled "Welcome to Kerry, Let's Do Business". The object of the Brochure is to promote Kerry as an investment destination.

Tommy O'Connor was appointed as County Librarian, while the Library Development Plan 2007-2012 was adopted in October, incorporating the development of all library services and the library management framework.

Tralee RAPID programme continued to progress its activities in the three delegated areas. The Regeneration

Plan for the Mitchels/Boherbee areas made significant strides, while playgrounds in Spa Road and St. Martin's Park were completed. Leverage funding provided car parking in the various housing estates and the refurbishment of derelict flats into Rathoonane Community Centre was completed.

Kerry County Council Playground Bye Laws 2008 were subject to public consultation and were adopted during 2007. A website www.kerryplay.ie was launched to further promote our play policy "Developing Play in Kerry", and provides information on playgrounds and their development.

The Arts Plan 2007-2012 was launched by Minister John O'Donoghue at Siamsa Tíre, while the County's football heritage was commemorated in a sculpture entitled "Kerry's Football Heroes" by Mark Rhode, which was unveiled at Clashleahane Roundabout near Tralee.

The Community & Voluntary Forum worked with the local development companies to develop an agreement regarding nomination of Community Representatives on to the new Local Development leader Boards. A new data base system was developed for the Register of Community and Voluntary Groups in the County, and groups had to re-register by March 31st.



County Manager Tom Curran, Director of Community & Enterprise John Breen and Michael Harkin, Project Leader ICT Department, Kerry County Council with Tim and Tom O'Connor, O'Connor Utilities at the launch of the Kerry Broadband MANS Project.

Other Key Performances:

County Development Board

Cllr Dan Kiely took over the chair of the Board from Cllr Ted Fitzgerald. The Board continued to work in

DIRECTOR'S OPERATIONAL REPORT ON COMMUNITY & ENTERPRISE, CULTURE, HERITAGE & RECREATION

partnership with the local development sector, statutory agencies and local partners to develop priority action for the County including a Strategy for Tourism, a Traveller Strategy and an Agriculture Strategy.

Task groups were established to work on a number of other areas such as; the Older Person, Social Inclusion, Health and Education (Family Learning) and Anti Racism Strategy.

Joint Policing Committee

In accordance with the Garda Síochána Act 2005, Local Authority, Oireachtas Members and Community Representatives were nominated to join with the County Manager and Garda Representatives to form a Joint Policing Committee with a view to monitoring patterns of crime in the County.

Developing Play in Kerry

Playgrounds at Killorglin, Sneem and Kenmare were opened. These additional playgrounds are incorporated as part of the Play Policy and are insured, managed and maintained by Kerry County Council.

Comhairle na nÓg

Lisa McDonagh, Christina Murhill, Anna Ní Dhonacha, Triona Brick, Mairéad Cremin and Colm MacGearailt were elected to Comhairle na nÓg for 2007 and met with the Mayor and Senior Officials of Kerry County Council in April.

This group were also consulted on the Draft Kerry County Library Development Plan 2007-2011, and the Draft Playground Bye-Laws 2008.

Tralee RAPID Programme

- ★ Elections were held for Community Representatives on the Area Implementation Team during 2007.

- ★ Additional funding from dormant accounts was procured and utilised for Sporting, Community and Educational projects in the area.

Arts Activities

- ★ Percent for Art commissions included the figurative 'Kerry's Football Heroes' sculpture by Mark Rhode, a dance piece by Catherine Young and 'Cúairt Phiarais' by Bríd Ní Mhóráin.
- ★ Residency schemes promoted access to and participation in the arts Countywide, including literature, film, dance and composition.
- ★ Art for the Young at Heart workshops for the elderly were held in three libraries for the elderly, in association with the Kerry Community Transport Service.
- ★ Three editions of "Art and Culture in Kerry" were published to promote activities in the County.

County Archaeologist

Twenty one archaeological impact assessments were carried out over the course of 2007. These assessments related to projects being undertaken by other departments within the council.

In addition, detailed GPS and GIS linked surveys were commissioned for nine graveyards within the county which are also listed as archaeological monuments in the Record of Monuments & Places for the county.

Other key performances

- ★ Maintenance programmes in 14 graveyards were inspected and advised on best practise.
- ★ 15 graveyards where ruins had partially collapsed or were in danger of collapse or where requests to erect memorials were received, were inspected.

DIRECTOR'S OPERATIONAL REPORT ON COMMUNITY & ENTERPRISE, CULTURE, HERITAGE & RECREATION



County Librarian Tommy O'Connor, Mayor of Kerry, Cllr Michael Healy Rae and County Manager, Tom Curran launch the new Kerry Library logo.

- ★ Comments, observations and recommendations were made to the National Monuments Section, DoEH&LG and the Planning Department, Kerry County Council on 328 individual planning applications.
- ★ 18 pre-planning meetings and consultations were undertaken during 2007.
- ★ Submissions relating to archaeology were made to five Local Area Plans and Action Plans.
- ★ Archaeological recommendations were also made to the Environment Section in respect of 67 Waste Permit applications during 2007.

Heritage Office

The second County Heritage Plan, incorporating Kerry's first ever Biodiversity Plan was drafted and adopted in 2007. In all 14 major projects were undertaken directly within the office, 10 of which were non-Heritage Council funded. A number of projects were given significant technical assistance throughout the year and were not funded directly by this office. These included the Ballyseedy Woods Invasive alien species project, Dromod Folklore Project, Iveragh Peninsula Tourism project, Kerry Geopark, Valentia Island Heritage Society, and others.

Advice was requested for in excess of 200 individual planning applications, five Local Area plans, 16 Part 8 waste water applications and one direct application. Pre planning applications were also advised upon.

Kerry Library Service

- ★ Mayor of Kerry, Cllr Michael Healy Rae launched Kerry Library's new logo in September.
- ★ "The Great Book of Kerry" by Seán Quinlan was launched
- ★ The 90th anniversary of Kerry patriot, Tomás Ághas was commemorated with a major exhibition at Leabharlann an Daingin.

Local Studies/Archives

This department provides public access to the local history of County Kerry and pursues an active collection policy with regard to the literature of the County

Acquisitions of note 2007:

- ★ Tralee and Fenit Harbour Commissioners Archives
- ★ Caherlaheen National School 19th century records
- ★ McGillicuddy of the Reeks Estate Papers

Community & Voluntary Forum

- ★ The Kerry Community Awards Scheme was co-ordinated for the fourth year, with Kerry Geopark Ltd. winning the overall Award for 2007
- ★ 250 smoke alarms were installed in Kerry homes in 2007, as part of the Community Smoke Alarm Scheme, run in partnership with the Fire Service.
- ★ A large number of group took up the special insurance scheme for community and voluntary groups in the County, co-ordinated by the Forum.
- ★ Comharchumann Leith-Triúigh and Kerry Geo-Park advanced to the 2007 All-Ireland Pride of Place competition based on their performance in the Community Awards competition. Kerry Geopark won the Environment category and Comharchumann Leith-Triúigh was shortlisted.

DIRECTOR'S OPERATIONAL REPORT ON CORPORATE SERVICES



Director of Services: John D Flynn

Senior Staff: Senior Executive Officer- Corporate Affairs: Gerard O'Brien; Senior Executive Officer- Human Resources: Martin O'Donoghue; Head of Information Systems: Brian Looney

At year end construction of the new Integrated Area Services Centre in Castleisland was nearing completion. The new building will incorporate a new Library, Area Office, File Storage Facility and Project Offices for our Water Services Capital Project Team. The overall cost of the project is €7.8 million with the new facilities expected to open to the public in early 2008.

This followed on from the official opening of the Killorglin Area Services Centre in May 2007, by Minister for the Arts, Sport and Tourism, John O'Donoghue TD.

The Centre, part of the Killorglin Town Centre Project, was developed by Kerry County Council and Laune Properties and contains Kerry County Council's Area Offices, library, South Kerry Development Partnership offices, and a tourist office, as well as underground parking and a children's playground to the rear.

Additionally, over 240 paintings from renowned artist



Brian McCarthy, FEXCO, artist Pauline Bewick, and Minister for Arts, Sports and Tourism, John O'Donoghue TD view some of the Bewick Seven Ages collection which is on permanent display in the Killorglin Area Services Centre.

Pauline Bewick are on permanent display in the Area Services Centre, adding greatly to the public enjoyment of the Centre.

Design work on the redevelopment of our corporate headquarters in Tralee was progressed during 2007, including a provisional review of the delivery of enhanced customer-orientated services with all staff.

The key element of the project is for an extension to the office accommodation to address the seriously inadequate facilities for the members, the public and our staff, at an estimated cost of €16.7 million. It also provides for a new modern laboratory, at a cost of €2.56 million, to ensure we carry out our ever-increasing role under water and environmental legislation to exacting standards. A new climate-controlled purpose built file store to safeguard the records of the Council at an estimated cost of €0.95 million and a maintenance building workshop costing €0.41 million will also be provided. The site development works to give effect to the new complex, including the provision of a sustainable geothermal heating system, drainage, roads and additional parking is estimated at €5.64m.

During 2007 the Council completed the roll out of the Performance Management and Development System across the four Kerry Local Authorities in accordance with the Local Government Sectoral Commitment of "Towards 2016" – Ten Year Framework Social Partnership Agreement 2006 – 2015. This process will be a significant contributing factor in the delivery of the goals of our Corporate Plan and will assist in improving our organisational performance.

DIRECTOR'S OPERATIONAL REPORT ON CORPORATE SERVICES

During 2007, the rollout of broadband continued across the County. Fibre-Optic Metropolitan Area Networks were built in Tralee (extending to Castleisland), Killarney & Listowel. These networks are expected to be commissioned early in 2008.

While designs for Wireless based MANS were completed for Castleisland, An Daingean and Kenmare, the construction phase of these projects is on hold pending a National Review by the Dept of Communications Energy and Natural Resources.

Having regard to the statutory obligations under the National Disability Act 2005, Kerry Local Authorities adopted their "Access For All" Implementation Plan 2008-2015 in late 2007, early 2008. An extensive public consultation process was undertaken in preparing the plan with input from statutory and voluntary agencies who work in the disability sector, along with input from members of the public.

Kerry County Council received 51 submissions during the public consultation phase of the process. Works totalling €13.5 million have been identified to be carried out during the period of the plan. Over €400,000 was spent throughout the County in 2007 in improving access to facilities, for people with disabilities.

Other Key Performances

- ☆ Newspaper supplement highlighting the services provided by Kerry County Council.
- ☆ Adoption of "Access for All" Implementation Plan 2008-2015.
- ☆ Development of Meetings, Events, and Expenses Tracking System for Council Services.
- ☆ Planning Permission obtained for light industrial distribution warehousing complex comprising 12 acres at Farranfore in conjunction with Laune Properties, the successful tenderer.
- ☆ Dealt with 66 requests under the Freedom of Information Act.
- ☆ 92% of First Year Students who submitted completed applications received the first installment of their Higher Education Grant by November 30th (within 9 weeks of starting college).



Minister for Arts, Sport and Tourism, John O'Donoghue, officially opens the Killorglin Area Services Centre.

DIRECTOR'S OPERATIONAL REPORT ON CORPORATE SERVICES

Information and Communication Technology

- ☆ Online payments are now possible for Traffic Fines with more services scheduled for online payments in 2008.
- ☆ Development of a new Wide Area Network to link the three Town Councils and the Area Offices of An Daingean, Castleisland, Cahirciveen, Killorglin, Killarney & Listowel, facilitating better service delivery in these locations. Parts of this wide area network have been delivered in partnership with other public bodies, such as the Munster Fire Service and the HSE demonstrating the Value for Money aspects of Shared Service/Shared Infrastructure.
- ☆ The e-Procurement Project "LA Quotes" helped Kerry County Council win the Technology Category at the Chambers Ireland Excellence in Local Government Awards.
- ☆ The Technology elements of new Council Initiatives such as the Pay-by-Lift Refuse Service and Non-Domestic Water Metering System were successfully implemented.
- ☆ A new information system for managing Council Meetings and Expenses (called MEET) was developed by our Software Development Team

Partnership

- ☆ The Partnership Committee met on 11 occasions during 2007.
- ☆ Partnership working groups were formed to examine issues in relation to service standards and for Kerry Library Service.

Partnership has been successfully involved in and supported the following projects.

- ☆ Ongoing development of a Communications Strategy
- ☆ Customer Service Training

- ☆ Irish Language Classes
- ☆ Return to Learning
- ☆ Numerical Skills Training
- ☆ Computer Literacy Classes for Outdoor Staff
- ☆ Ongoing Protective Clothing Reviews

Human Resources

- ☆ Implementation of Organisational Support Programme
- ☆ Continued development of Absenteeism Management
- ☆ Continued development of Performance Management and Development Systems
- ☆ Commencement of a pilot site for new Local Government HR/Payroll IT system
- ☆ Introduction of the "Star Pupil" Work Experience Programme with a view to developing a pathway towards employment in the local authorities for Travellers.

The following were the main training courses delivered during 2007:

- ☆ Briefing Sessions on the Signing, Lighting & Guarding Course (Chapter 8).
- ☆ Information Technology Training was provided based on the PMDS System.
- ☆ In accordance with Health & Safety Legislation, a First Aid Training Programme was delivered.
- ☆ Teastas Eorpach na Gaeilge (European Certificate in Irish). Courses at two levels for this Certification were provided.

Section 3

FINANCIAL STATEMENT



Head of Finance: John O'Connor

Senior Staff: Financial/Management Accountant: Angela McAllen. Senior Executive Officers: Karen Lynch (acting): Pat O'Shea (acting): Kathleen Moriarty (acting – maternity leave)

The Council incurred global outlay of €267.4m in the year ended 31st December, 2007. This comprised of revenue expenditure of €138m, capital expenditure of €126.3m and housing loan activity of €3.1m. Global income in respect of the programmes mentioned amounted to €252.6m.

Financial Overview

Fixed assets under the control and management of the Council were valued at €3,407m (nett) at year's end. Further details are given in the balance sheet following.

The overall financial position of the Council may be described as continuing to be generally satisfactory.

The Council has an extensive programme of major infrastructural improvement underway at present in support of the overall economic, social, cultural and environmental well-being of the County.

The Capital Investment Programme approved by the Council for the financial period 2008-2010, envisages a total investment of €529.89m over the period, with a requirement for €175.97m by way of local contribution.

In particular, the provision of new water schemes and the improvement of existing schemes will require very sizeable investment in the coming years, both exchequer grant-aid and local contributions.

The new Sewerage Scheme Investment Programme discussed at recent Council Meetings envisages a requirement for funding of €125m to upgrade or construct schemes for 57 towns and villages to meet new EPA Licensing requirements and to provide the infrastructure necessary to allow the county to develop to its full economic and social potential.

Based on current experience, as indicated then, it is estimated that, allowing for government grant-aid, a local contribution of around €40m will be required towards the overall investment.

In addition, the Council is advancing a Drinking Water Investment Programme estimated to cost at least €100m with a likely local contribution required of €35m. Furthermore, improvements needed to bring our drinking water quality in existing schemes up to the required minimum standards, will require investment of a further approx. €30m, based on our existing information, with a likely local contribution required of €10m.

All these projects, when completed, will require substantial maintenance funding and borrowing repayments. In the present harsher economic environment, a key challenge for the Council is to continue to manage and structure our finances, both capital and revenue, so that we can satisfactorily and successfully meet the emerging needs. Besides the local contribution, the Council is dependent, of course, on substantial national exchequer grant-aid to progress the investment programme envisaged.

Achieving the maximum outcomes and best value from the funds available will be key objectives, more than ever, in the next several years.

INCOME AND EXPENDITURE ACCOUNT STATEMENT

For Year Ended 31st December 2007

The Income and Expenditure Account Statement brings together all the revenue related income and expenditure. It shows the surplus/ (deficit) for the year.

	<i>Gross Expenditure</i>	<i>Net Income</i>	<i>Net Expenditure</i>	<i>Expenditure</i>
	2007	2007	2007	2006
<i>Expenditure by Programme Group</i>	€	€	€	€
Housing and building	11,858,876	10,389,755	1,469,121	1,734,196
Road transportation and safety	51,106,712	34,807,207	16,299,505	14,559,904
Water supply and sewerage	18,661,070	11,369,437	7,291,633	5,163,007
Development incentives and controls	6,930,284	2,454,286	4,475,998	4,214,876
Environmental protection	21,831,601	12,470,540	9,361,061	9,527,060
Recreation and amenity	5,617,134	370,103	5,247,031	4,980,249
Agriculture, education, health and welfare	12,980,568	11,097,645	1,882,923	1,887,607
Miscellaneous services	5,672,951	4,100,657	1,572,294	1,351,138
Machinery and stores	-	-	-	-
Central management services	-	-	-	-
Support services	-	-	-	-
Total Expenditure/Income			134,659,196	87,059,630
Net Cost of Programmes to be funded from Rates and Local Government Fund			47,599,566	43,418,035
Local government fund			27,600,743	25,497,932
County demand			6,928,107	6,783,720
Commercial rates			16,395,658	15,783,883
Surplus/ (Deficit) for Year before Transfers			3,324,942	4,647,500
Transfers from/ (to) Reserves			(3,113,454)	(4,477,401)
Overall Surplus/ (Deficit) for Year			211,488	170,099
General Reserve at 1st January			1,362,304	1,192,205
General Reserve at 31st December			1,573,792	1,362,304

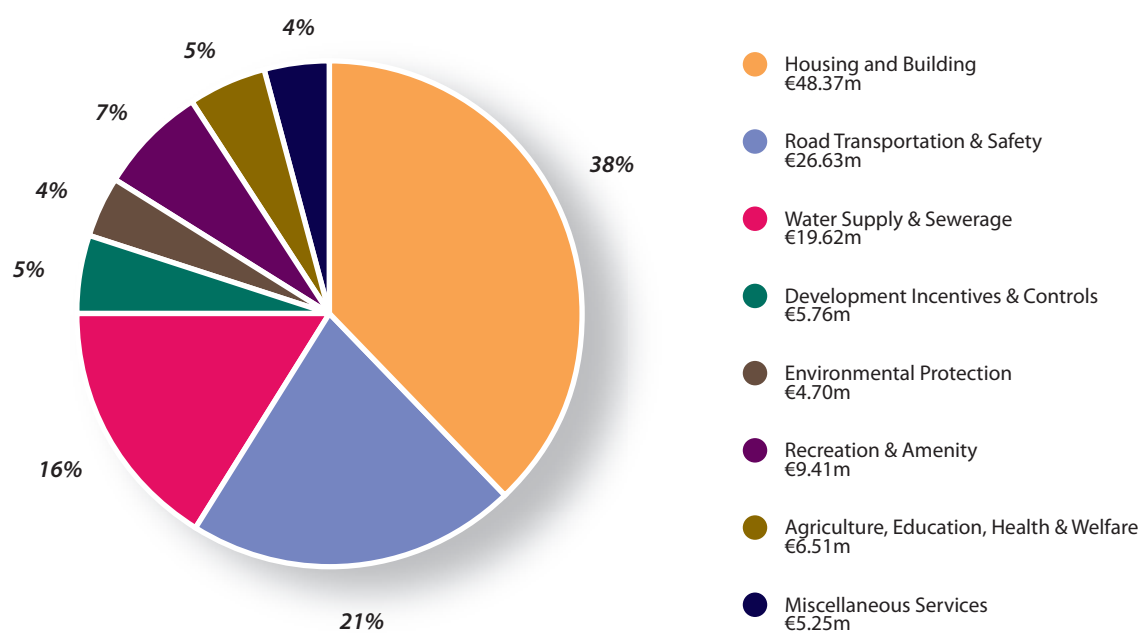
KERRY COUNTY COUNCIL

Balance Sheet as at 31st December 2007

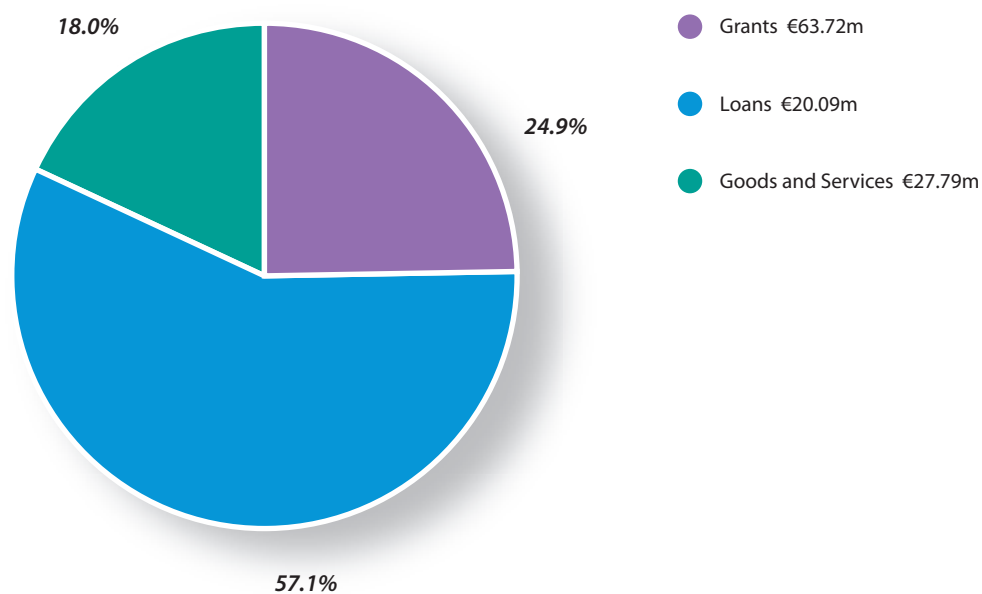
	2007	2006
	€	€
Fixed Assets		
Operational	353,748,653	318,081,490
Infrastructural	3,049,751,907	3,049,075,727
Community	1,001,783	902,723
Non-Operational	2,036,043	1,045,996
	3,406,538,386	3,369,105,936
Work-in-Progress and Preliminary Expenses	53,586,679	42,445,976
Long Term Debtors	35,035,856	30,628,098
Current Assets		
Stock	906,016	862,421
Trade Debtors and Prepayments	28,264,123	15,235,326
Bank Investments	14,750,000	35,000,000
Cash on Hand	2,476,165	943,580
	46,396,304	52,041,327
Current Liabilities		
Bank Overdraft	7,290,022	5,054,889
Creditors & Accruals	12,660,574	11,116,997
Urban Account	68,358	75,365
Finance Leases	39,381	82,351
	20,058,335	16,329,602
Net Current Assets / (Liabilities)	26,337,965	35,711,725
Creditors (Amounts greater than one year)		
Loans Payable	60,353,545	42,508,886
Finance Leases	1,243	40,623
Refundable Deposits	943,909	691,415
Other	-	-
	61,298,697	43,240,924
Net Assets / (Liabilities)	3,460,200,193	3,434,650,811
Financed By		
Capitalisation Account	3,406,538,386	3,369,105,936
Income WIP	45,715,133	48,107,633
Specific Revenue Reserve	5,476,625	5,476,625
General Revenue Reserve	1,573,792	1,362,304
Other Balances	896,257	10,598,313
Total Reserves	3,460,200,193	3,434,650,811

KERRY COUNTY COUNCIL FINANCIAL STATEMENTS

Kerry County Council - Capital Expenditure 2007

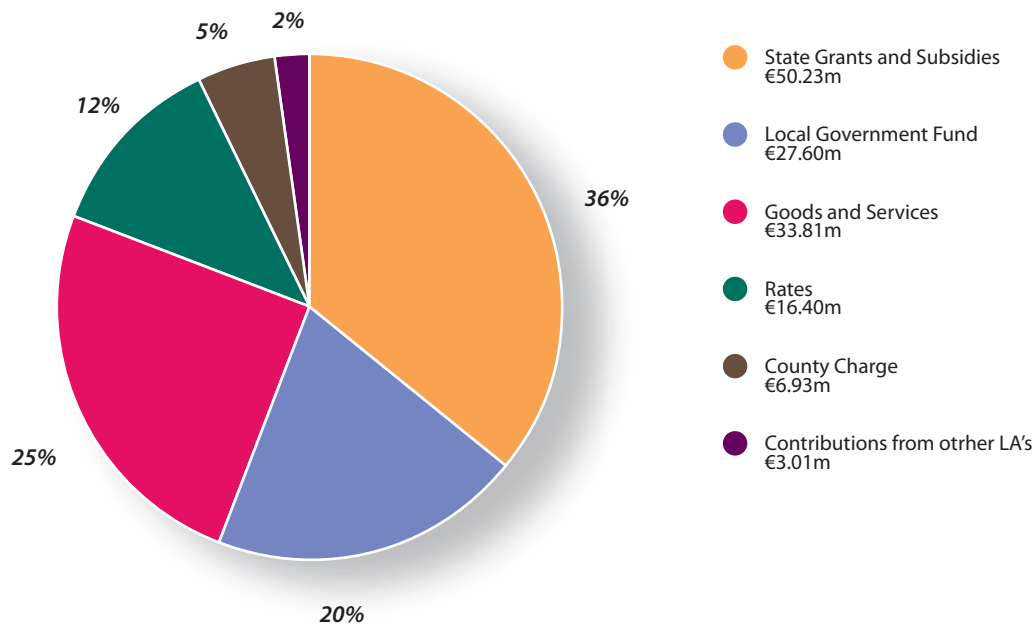


Kerry County Council - Sources of Capital Funding 2007

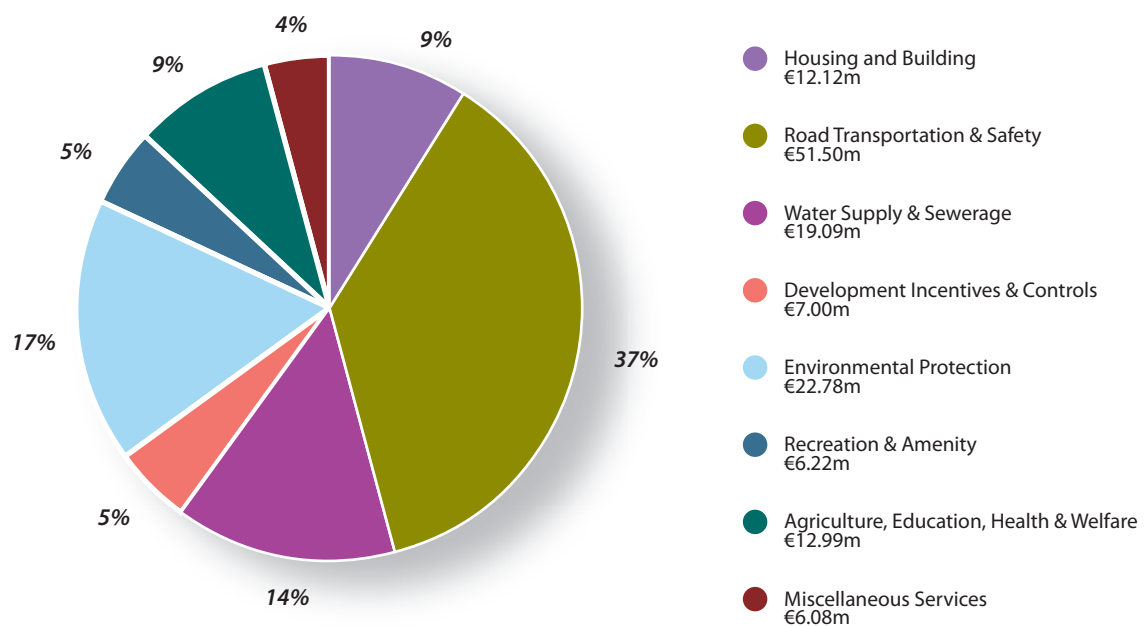


KERRY COUNTY COUNCIL FINANCIAL STATEMENTS

Kerry County Council - Revenue Income 2007



Kerry County Council - Revenue Expenditure 2007



*KERRY COUNTY COUNCIL FINANCIAL STATEMENTS***Late Payments 2007**

In accordance with the Prompt Payment of Accounts Act, 1997, and European Communities (Late Payment in Commercial Transactions Regulations, 2002) the details of late payments to Creditors is set out:

	2007
Number of late payments in excess of €317.44	23
Value of late payments in excess of €317.44	€6,774
Value of late payments as a proportion of the value of total payment made to suppliers	0.004%
Penalty Interest Paid	€26.81

Section 4

REPORT FROM KERRY COUNTY ENTERPRISE BOARD



Chief Executive Officer's Report

CEO: Martin Collins

Board Membership

Local Authority Members (4)

Mr Pat McCarthy, M.C.C.

Ms. Norma Foley, M.C.C.

Ms. Anne McEllistrim, M.C.C.

Ms. Toireasa Ní Fhearaioisa, M.C.C.

Social Partners (3)

Mr John O'Connor, I.C.M.S.A.

Mr Gene Boyd, I.B.E.C.

Mr Andrew McCarthy, ICTU

State and Local Agencies (4)

Mr Martin Riordan, County Manager/Chairman (to 18/02/07)

Mr Tom Curran, County Manager/Chairman (from 19/02/07)

Mr Brian Quinlan, Regional Manager, Enterprise Ireland (to 29/06/07).

Mr Jerry Moloney, Regional Manager, Enterprise Ireland (from 22/10/07)

Mr Tom Shanahan, C.A.O. Teagasc.

Mr Des O'Halloran, Manager, FAS, Tralee.

Community Representatives (3)

Ms. Monica Prendeville

Ms. Sheila Hannon

Ms. Margaret Casey

Activity Levels

Board Approvals 2007

Sector	No.	Amount €	Jobs Approved
Manufacturing	23	346,337	45
Local Services	14	129,500	24
International Traded Service	3	27,500	9
Feasibility Study	8	21,700	0
Enterprise Units	1	50,000	0
Total	49	575,037	78

REPORT FROM KERRY COUNTY ENTERPRISE BOARD

Enterprise Supports

The Board expended a sum of €239,243 on enterprise supports which benefited a further 576 potential and existing entrepreneurs. The following were the main enterprise support measures undertaken by the Board during 2006.

Schools Programme

The creation of an 'enterprise culture' is one of the functions of the Board and one of the means of achieving this is through the 'Student Enterprise Awards Scheme' run and funded by the Board in second level schools throughout the county.

Forty three students participated in the scheme in the 2006/2007 school year. Prize winners in this year's competition came from Mercy Mounthawk, Tralee and Meanscoil na Toirbith, An Daingean.

At Third Level the Board supported the Genesis Enterprise Programme which is administered by the Cork Institute of Technology in association with IT Tralee. This Programme provides a package of supports for graduates wishing to start knowledge based, innovative businesses with export potential.



Pictured at the launch of the Kerry Enterprise Action Team's 'Welcome to Kerry-Let's Do Business' brochure in Dublin were Dick Spring, FEXCO, Jerry Kennelly, Stockbyte, Minister for Arts, Sport & Tourism, John O'Donoghue, Mayor of Kerry, Cllr Ted Fitzgerald, Michael Fitzgerald, Altobridge & Kerry County Manager Martin Riordan.

Enterprise Awards

Kerry Footwear and Orthotic Specialists Ltd., Ashe Street, Tralee, won the County Enterprise Awards competition. This company was set up in April 2006 by Catriona Kelly and Anna Marie Horgan to fabricate and manufacture of Specialist Footwear.

Mentoring/E-Business

A total of 114 clients received Mentor and E-Business support in 2007. These programmes provide one-to-one training and mentoring mainly to those who have just started their own business.

Start Your Own Business Courses

Organised by the County Enterprise Board, 148 people participated in a series of "Start Your Own Business Courses" which took place in Tralee, Killarney and Castleisland throughout the year.

Networking

The Kerry Business Network, a new initiative to stimulate interaction between small businesses in the County which was launched in May 2005, continued during 2007. A total of 145 people participated in the monthly network sessions.

A dedicated Network for Women was established during 2007 and a total of 73 females participated in these events during the course of 2007. The main purpose of the networking projects is a sharing of ideas and, thereby, learning from one another.

REPORT FROM KERRY COUNTY ENTERPRISE BOARD

Other Industrial Activity

New Hotel for Tralee

Tralee's newest Hotel – The Fels Point Hotel, opened for business in June 2007. The 166 Bed Hotel incorporates a Conference Centre and Health and Wellness Suite.

Kerry Airport

In June 2007 Kerry Airport announced a 4% increase in pre-tax profits. The Company also announced that it was successful in its application for funding under the Transport 21 Programme, securing €17.7m towards future development.

Young Entrepreneur Initiative

An initiative by IT Tralee in association with a number of local businessmen, including Jerry Kennelly, was launched in September 2007 to encourage entrepreneurship among Second Level Students. The project has been funded by contributions from local businesses as well as the County Enterprise Board.

FEXCO

In September 2007, Fexco announced a deal with a semi-State Company which will involve the creation of an additional 140 jobs for the Killorglin and Cahirciveen. The Company already employs 580 people in Cahirciveen and Killorglin.

Pulse Learning Ltd.

In October 2007, Pulse Learning Ltd., an IT Company based at the Kerry Technology Park, Dromtacker, won First Prize in the Deloitte Technology Fast 50 awards. The awards rank the fastest growing technology companies in the island of Ireland.

Altobridge Ltd.

In November 2007 the Tralee communications firm, Altobridge, announced the signing of a multi-million deal with mobile phone giant Ericsson. The initiative will have the effect of reducing the cost of mobile phones use for customers in emerging markets.

Section 5

TRALEE TOWN COUNCIL

FOREWORD BY AN MHEARA



Cllr. Miriam McGillicuddy
Mayor of Tralee

I am particularly pleased to reflect on the significant progress made by Tralee Town Council in 2007, in the areas of community development, enhancement of the appearance of the town, improvements in infrastructure and the substantial enhancement of the amenities within the town.

I am confident these developments will make the town a more attractive place to live and visit in the future.

The continued work by the Members and Officials in the area of community development establishes a strong foundation for investment in the town.

The Mitchels Regeneration project is a fine example of how Tralee Town Council works with the other statutory agencies, and most importantly the local community, in shaping the redevelopment of the area. A significant feature of the process has been the empowerment of the community in designing their future environment.

The Joint Policing committee became firmly established in 2007 and the Town Council strengthened its relationship with the business community in the town centre and broadened its role in developing and working with residents associations.

For the first time Tralee received a silver medal award in the Tidy Towns competition, rewarding the consistent improvements made over the past five years. The efforts of the Council's outdoor staff, the FÁS community employment scheme and the work of Towards a Better Tralee and the Tidy Towns committee all contributed to this result.

In 2008 every effort will be made to broaden this group further to engage the business community, additional residents associations and the public at large.

I am delighted with the additional amenities being provided within the town. For me the new playground in

the Town Park is the highlight as it has attracted a large number of families back into the park.

The completion of the precinct park in Camp, the first phase of the Ballyard Park and the neighbourhood park at Manor continues and extends the network of parks being developed throughout the town. Work on the Lee River Walk also started in 2007 and this will be a huge asset to the town upon completion.

The involvement of Tralee Town Council with the community groups and other agencies has proven to be a successful avenue for bringing about improvements in the town and has also helped to foster a wider sense of ownership of the projects.

The Town Development Plan, currently under review, offers further opportunities for the wider population to influence the development of the town.

I wish to thank the staff of the Council, the communities we engaged with, all committees and the statutory and voluntary agencies who have contributed to Tralee town in the past year. I look forward to 2008 and a continued successful working partnership.

Cllr. Miriam McGillicuddy
Mayor of Tralee

TRALEE TOWN COUNCIL

TOWN MANAGER'S REPORT



Michael McMahon
Town Manager

The preparation of the new Town Development Plan for Tralee, covering the period 2009-2015, commenced in October 2007. The initial phase of public consultation was very successful with an unprecedented response from the public, who attended the public meeting in large numbers and also sent in over 130 written submissions.

The preparation of the Plan will continue throughout 2008 and it is planned to have it completed within the lifetime of the current Council.

During 2007 Tralee Town Council spent a total of €44m. This represents a major contribution to the ongoing development of our Town and is matched by major private investment in Tralee.

Significant private developments completed in 2007 include the Centre Point development, the Fels Point Hotel, the new Cinema and the mixed use development on Dominick Street. The existing and planned developments in the town highlight the continued confidence that exists in Tralee.

The pedestrianisation of the town centre concentrated on Dominick Street in 2007, with a high quality pavement continuing the theme from The Square.

The overall improvement of the road network surface in Tralee continued in 2007 by both Kerry County Council and the Town Council. Prince's Street, Munster Road, Monavalley and Killeen Road were improved during the year. The progress achieved over the past three years has resulted in a vastly improved road network within the town. The challenge going forward is to achieve the completion of the ring roads around Tralee to alleviate congestion in the town centre.

The other major infrastructure projects in 2007 included the completion of the MANS broadband network within the town, the continued replacement of the old cast-iron watermains and the continuation of the project to separate foul and surface water drainage systems.

The improvement in the watermain network and the introduction of zoned pressure areas in the town has resulted in a 10% reduction in water usage in the town.

The planned maintenance programmes in the local authority estates continued in 2007, and it is expected to complete the central heating programme in 2008. The overall improvement in the quality of housing has allowed the Council to target resources in a planned way.

On the capital side, the first phase of the Mitchels Regeneration Scheme commenced, with the construction of 42 housing units for the elderly in August. Part VIII planning was secured for the Integrated Services Building, the centrepiece of the new Mitchels Crescent Street.

The remainder of the capital programme concentrated on the acquisition of second hand units.

The coming year is one of significant importance for the town with the draft Town Plan being published and the Western Area Plan being finalised. The Western Area Plan will open up a large tract of land for development and will also facilitate the Western Ring Road.

Michael McMahon
Town Manager

TRALEE TOWN COUNCIL

MEMBERSHIP OF TRALEE TOWN COUNCIL 2007



Mayor: Cllr. Miriam McGillicuddy



Cllr John Commane



Cllr Ted Fitzgerald



Cllr Cathal Foley



Cllr Tommy Foley



Cllr Maisie Houlihan



Cllr Pat Hussey



Cllr Norma Foley
(Mayor 2006-2007)



Cllr Kieran Moriarty



Cllr Terry O'Brien



Cllr Karen Tobin



Cllr Johnny Wall

REPORT ON TRALEE TOWN COUNCIL OPERATIONS

MEMBERSHIP OF BOARDS/COMMITTEES

Kerry Educational Service

Cllr Johnny Wall

Cllr Norma Foley

South Western Regional Authority (Operational Committee)

Cllr Karen Tobin

Partnership Trá Lí

Cllr Kieran Moriarty

Cllr Johnny Commene

Jeanie Johnston (Ireland) Co. Ltd.

Cllr Johnny Wall

Tralee Task Force

Cllr Johnny Wall

Cllr Norma Foley

Cllr Pat Hussey

Kerry County Council Strategic Policy Committee Scheme

Cllr Johnny Wall

Cllr Karen Tobin

Kerry County Tourism Board

Cllr Johnny Wall

Association of Municipal Authorities of Ireland

Cllr Ted Fitzgerald

Cllr Miriam McGillicuddy

Blennerville Windmill Company Ltd.

Cllr Johnny Wall

Tralee/Dingle Steam Train Co. Ltd

Cllr Ted Fitzgerald

Tralee Development Co. Ltd (Lee Valley Development)

Cllr Johnny Wall

Tidy Tralee Together

Cllr Miriam McGillicuddy

Cllr Karen Tobin

Tralee Sports & Leisure Centre

Cllr Kieran Moriarty

Cllr Terry O'Brien

Tralee Fenit & Pier Harbour Commissioners

Cllr Johnny Wall

Ballyseedy Wood Management Steering Group

Cllr Tommy Foley

Cllr. Kieran Moriarty

REPORT ON TRALEE TOWN COUNCIL OPERATIONS

CONFERENCES ATTENDED BY COUNCILLORS IN 2007

<i>Name of Conference</i>	<i>Location</i>	<i>Number attending</i>
AMAI Spring Conference 07	Brandon Hotel, Tralee	3
Training Seminar for Councillors	Clonmel Park Hotel, Clonmel	2
LAMA Annual Spring Conference	Gleneagle Hotel, Killarney	1
Local Govt. Housing Service	Silver Tassie Hotel, Letterkenny	3
AMAI Special General Meeting	Strand House Hotel, Curragh, co Kildare	1
Irish Public Bodies	Burlington Hotel, Dublin	1
Joint Policing Committee Meeting	Hudson Bay Hotel, Athlone	1
Training Seminar for Councillors	Baltimore Harbour Hotel, Baltimore	6
Parnell Summer School	Avondale House, Co. Wicklow	1
Local Govt & The Arts	Dooley's Hotel, Birr, Co. Offaly	2
AMAI 94 th Annual Conference, 2007	Brandon House Hotel, New Ross, Co. Wexford	4
Biennial National Social Housing Conference	White's Hotel, Wexford	1
Arts Tourism Seminar	Malton Hotel, Killarney	1
Fourth National Conference- Substance/Alcohol Misuse	Malton Hotel, Killarney	1
Health & Safety in Local Govt. Training Seminar	Carraig Hotel, Carrick an Suir, Co. Tipperary	1
LAMA Annual Winter Conference	Dolmen Hotel, Carlow	2
Joint Policing Committee Meeting	Shelbourne Hotel, Dublin	1
Clare Tourism Conference	Falls Hotel, Ennistymon, Co. Clare	1
Training Seminar on Local Govt Budget 2008	Bunclody, Co. Wexford	1
Pathfinding Conference	Regency Hotel, Dublin.	1

REPORT ON TRALEE TOWN COUNCIL OPERATIONS

MEMBERS EXPENSES 2007

<i>Annual Allowances</i>	
Mayor	€9,600
Deputy Mayor	€2,400
Members Expenses	€37,702.50
Representational Payments to Members	€80,330.57

The total payment by Tralee Town Council in respect of attendance, authorised by the authority, at a meeting of a prescribed association of local authorities of which the authority is a member, and attendance, authorised by the authority, at a conference, seminar or other meeting or event was €17,333.90 in 2007. The total amount of this payment which related to travel and subsistence expenses within the State was €17,333.90.

The total payment by the Council in respect of the Councillors annual expenses allowance and the allowances for non-members on committees was €37,702.50 in 2007.

REPORT ON TRALEE TOWN COUNCIL OPERATIONS

ROADS AND TRANSPORTATION

In 2007, Tralee Town Council continued its programme of upgrading roads within the town area.

The primary aims were to make the roads and footpaths safer and to achieve better walking and riding surfaces for pedestrians, cyclists and vehicular traffic. Accessibility for all played a major part in all works carried out.

- ☆ €228,000 Discretionary Block Grant spent on strengthening and resurfacing the Monavalley Industrial Estate Road, and junction improvement works at the Killeen Road/Novitiate Road.
- ☆ €180,000 spent on footpath improvements, including disability access and improved pedestrian safety at O'Rahillys Villas, Casement's Avenue, Stacks Villas, Kerins Park (Rear), Old Gallowsfield, Laurel Court Bungalows, Town Centre, Clash West and Denny Street.
- ☆ €257,000 spent on road improvements to Monastery Road, Munster Road, Ballymullen, Caherina-Ballyvelly, Ivy Terrace, Ballinorig Road, Blackberry Lane, Cloonanorig-Ballinalourt.
- ☆ Development Levies funded the realignment of the exit junction from Manor Village and new footpaths on Clash Road.
- ☆ Dominick Street area pedestrianised.
- ☆ Car parking extended in New Marian Park under Mitchels Regeneration Project.
- ☆ Tralee Town Council sponsored a temporary 'Park and Ride' transportation system, allowing people to park outside the town centre and take the bus into Tralee.
- ☆ Roads taken in charge included: Brooklawn, Monalee, Blackberry Lane, Monastery Road, Ashgrove, access road to KDL Grounds, cul-de-sac at Oakview, end of cul-de-sac at Laurel Court, Ballyrickard.
- ☆ Tralee Town Council adopted on-street parking bye-laws and car park bye-laws.
- ☆ Increased the number of Pay & Display machines in service.

REPORT ON TRALEE TOWN COUNCIL OPERATIONS

PLANNING & DEVELOPMENT

Tralee Town Council received a total of 219 planning applications during 2007, of which there was a total of 32 (14.61%) invalid.

This compared to 235 applications in 2006, 22 (9.36%) of which were invalid. The following is a breakdown by category of the valid planning applications received during the year compared to 2006:

Category	2006	2007
Domestic dwellings	46	56
Domestic extensions	42	39
Commercial	57	61
Miscellaneous	68	31
Total	213	187

Appeals

Twenty planning decisions were appealed to An Bord Pleanála in 2007 and no decision had issued on 10 of these appeals as of the 31st December 2007.

Of the 10 appeals dealt with, An Bord Pleanála upheld the Council's decision in eight cases and reversed the Council's decision on two cases.

Significant Planning Applications Received

07/7402 Colliswood Homes Ltd:

Construct 66 No dwelling units at Mounthawk

07/7438 Rivermeadow Developments Ltd:

Construct 3 storey car park development at Edward St

07/7463 Ross & Slaterry:

Construct apartment, retail & carpark development at Godfrey Place & Mary St

07/7472 Manor Investment Syndicate:

Construct additional customer car park & cycle parking at Manor West Retail Park

07/7491 Dillon Waste Ltd:

Construct Materials Recovery Facility & Public Recycling Centre at The Kerries

REPORT ON TRALEE TOWN COUNCIL OPERATIONS

PLANNING & DEVELOPMENT

07/7502 Ruden Homes Ltd:

Construct 53 no. Dwellings & provide for the future development of additional 291 No. houses & 34 No Serviced sites at Mounthawk.

07/7504 Tristan Goodfellow:

Convert existing barge to barge with Restaurant at The Marina

07/7526 John Crean:

Construct 142 No Houses at Rahoonane

07/7560 John Casey Project Management Ltd:

Demolish existing structures & construct mixed development of residential units, retail, offices & community facilities at John Joe Sheehy Rd.

07/7569 Dunnes Stores:

Construct a 4 storey car park with 509 car parking spaces

07/7577 Manor House Manor East Ltd:

Construct 6 storey commercial development comprising mixture of retail & office accommodation at Rathass

Planning Enforcement

Tralee Town Council investigated 80 alleged breaches of the planning regulations during 2007. A total of 35 warning letters and 11 Enforcement notices were issued on foot of these investigations and in the majority of these cases the situation was rectified to the satisfaction of the Planning Authority.

However, three cases have been forwarded to the Legal Department to initiate legal proceedings.

Development Contributions

Tralee Town Council maintained its high level of collection of development contributions during the year with over €3.2 million collected.

Development Plan

Two variations were carried out to the Town Development Plan during 2007, one for the re-zoning of lands from Parks/Recreation to Town Centre at Austin Stack Park, John Joe Sheehy Rd. and one to change the land-use zoning of lands at Ballymullen from Leisure/Tourism & Residential to Commercial.

Tralee Town Council, as Planning Authority, is required under Part 11 of the Planning & Development Act 2000 to review its 2003-2009 Development Plan. The Development Plan sets out the overall strategy for the proper planning and sustainable development of the town for the next six years and consists of a written statement and plans indicating the development objectives for the town.

The new Development Plan will cover the period 2009-2015 and an issues document was prepared in October 2007 explaining the process, and highlighting the main issues involved. This document was widely circulated and the consultation process included public meetings to elicit the views of the public and invite submissions and observations. This initial public consultation was very successful and 131 submissions were received from various bodies and individuals.

The process of reviewing the Town Development Plan is continuing and it is expected that the Draft Plan will be published in June 2008.

REPORT ON TRALEE TOWN COUNCIL OPERATIONS

WATER SERVICES

Water Services

During 2007, a total of 1,900m of ageing watermain was replaced by Tralee Town Council's Water Services Crew and outside contractors, resulting in an improved network which meets the demands arising from increased development within the town area.

Key Performances

- ★ Installation of a 150mm diameter watermain at Stacks Villas from Kevin Barry's roundabout to Balloonagh Cross.
- ★ Installation of a 200mm and 100mm diameter watermain in Upper Rock Street from Kevin Barry's roundabout to Brewery Road.
- ★ Installation of a 300mm diameter watermain in Princes Quay from Castlecountess to Bridge Street.
- ★ 14 new water connections to facilitate new development within the town area.
- ★ 60 leaks reported by the public and Kerry County Council Leak Detection Unit repaired.
- ★ Pressure reduction valves installed within the town area.

REPORT ON TRALEE TOWN COUNCIL OPERATIONS

ENVIRONMENTAL PROTECTION

Tralee was among the prize winners in the Annual Tidy Towns Competition 2007, securing a silver medal in the Large Towns category.

In 2007 dry recyclable waste collected by Tralee Town Council amounted to 4.72% of the residual waste tonnage. During that period the Council collected 35,555 dry recyclable bags. The cost of a tag for residual waste remained the same as in 2005 & 2006.

2007 was the second year in which capital money, derived from planning levies became readily available to undertake specific environmental works within the town.

Major works were undertaken in the Town Park. These included continued railing replacement, drainage of the central area of the park, upgrading of the footpaths and the provision of picnic facilities.

The most significant changes to the Town Park have been the provision of a new playground and replacement of one of the old fountains.

During July and August Tralee Town Council promoted the 'Walk and Talk' initiative, hosted by Don Nolan. These talks are specifically designed to promote knowledge of the town park and the flora that is contained within.

Other amenity projects undertaken throughout the year included Phase I of the parkland developments at Ballyard West, Blennerville and Manor West.

Additionally, members and officials of Tralee Town Council were involved in organising the Féile na mBláth Festival, which was held in Tralee Town Park between 15-17 June.

Tralee marked National Volunteer Day on September 26 with the planting of a 100 metre long flower wall at Rahoonane Estate along the Killeen Road.

Work began on the River Lee Nature & Cycleway, which has been a long-term objective of the Town Council who last year approved Part 8 Planning for the project. The project has received grant support totalling €416,640 from the Tourism Infrastructure Fund of the new National Development Plan. The balance of funding for the project is being provided by Tralee Town Council from its amenity levy fund.

REPORT ON TRALEE TOWN COUNCIL OPERATIONS

HOUSING AND SOCIAL SUPPORT

Tralee Town Council's Capital Allocation for house construction and acquisition amounted to €12.72 million (exclusive of Internal Housing Capital Receipts) in 2007. Due to the extensive acquisition programme, the Council spent almost €13 million on housing capital, thus exceeding its allocation.

In addition to the acquisition of houses in a wide variety of locations around Tralee, construction progressed on housing developments at Moyderwell, Cahermoneen, and Shanakill.

Tralee Town Council's rented stock at 31st December 2007 comprised 1,166 units. Tralee Town Council's current housing list is 1,287, an increase of 18%, and is comprised as follows:

Household size	No. of applicants
One-person	583
Two-person	382
Three-person +	322

The Mitchels Regeneration Programme saw significant progress with ongoing public consultation with stakeholders on proposals for the area. Plans for the Integrated Services Building were advanced and the decanting of the houses at Mitchels Crescent commenced in September, with tenants being re-housed in other suitable accommodation in Tralee.

In addition, the programme of central heating installation and electrical upgrading continued as did the Council's policy of refurbishment of vacant dwellings.

Key Achievements:

- ☆ Work progressed on 42 units for the elderly at Moyderwell
- ☆ Conversion of eight apartments to six houses at Shanakill
- ☆ 16-house scheme at Cahermoneen completed and occupied
- ☆ On-going sale of residential sites at Croogorts
- ☆ Acquisition of 38 Housing units
- ☆ Launch of Affordable Housing Scheme (10 units) at Fairway Heights
- ☆ Launch of Affordable Housing Scheme (10 units) at Lee Drive
- ☆ 747 maintenance requests received from tenants
- ☆ €890,391 spent on Housing Maintenance
- ☆ Installation of central heating and electrical upgrading in 110 units
- ☆ 41 casual vacancies arose in the Council's rented stock during 2007
- ☆ 12 houses sold to tenants under the Tenant Purchase Scheme
- ☆ €1,948,291 collected in Housing Rents

REPORT ON TRALEE TOWN COUNCIL OPERATIONS

HOUSING AND SOCIAL SUPPORT

- ☆ The Council's Tenant Enforcement Officer investigated 241 complaints, a decrease of 18.5% on the previous year
- ☆ 353 applications for housing were made during 2007
- ☆ 98 housing units allocated.
- ☆ 31 transfer applications were received.

Voluntary Housing

Tralee Town Council is continuously engaged in active consultation with local and national voluntary housing bodies to provide further housing accommodation in Tralee in order to meet the needs of our housing list

Affordable Housing

Following the success of Tralee's first affordable housing scheme at Gort na Greine in 2006, two schemes were negotiated with private developers in 2007.

In October 2007, applications were invited for the purchase of ten affordable houses at Fairway Heights and a further ten at Lee Drive – a total of 85 applications were received.

At year's end negotiations were ongoing with a private developer to provide additional affordable housing. In addition, plans for the provision of social and affordable housing at Ballyard were further advanced.

REPORT ON TRALEE TOWN COUNCIL OPERATIONS

FINANCE

<i>Expenditure</i>	<i>2006</i>	<i>2007</i>
Revenue Expenditure	€19,952,609	€20,371,393
Capital Expenditure	€30,195,492	€23,841,070
Annual Rate on Valuation	76.50	78.41

<i>Main Sources of Revenue Income 2007</i>	<i>€</i>
Rates	7.7m
Local Government Fund	3.5m
Exchequer Grants/Recoupments	2.0m
Housing Rents	1.8m
Parking Charges	1.6m
Water/Sewerage Charges	1.3m
Refuse Charges	1.1m
Visitor Attractions	0.3m
Planning Fees	0.2m

KILLARNEY TOWN COUNCIL

FOREWORD BY AN MHEARA



Cllr Niall O'Callaghan
Mayor of Killarney

Killarney Town Council has undertaken many exciting projects in the past 12 months, the benefits of which will be enjoyed by locals and visitors for many years to come.

The Town Centre has benefited hugely from the re-development of Main Street, with work completed in early 2007. The street is much more pedestrian friendly as the footpaths were widened and traffic reduced to one lane. The addition of four beautifully placed trees has also helped to enhance this town centre street.

The Killarney Looking Good Committee had an exceptionally busy and successful year. In June, Killarney was named as Ireland's Best Kept Town, a magnificent achievement as it encompasses all 32 counties, and is awarded jointly by the Department of the Environment, Heritage and Local Government and Northern Ireland's Amenity Council.

July saw the arrival of the European Entente Florale Judges from 12 European Countries. Despite the rain that fell on Judging Day the Judges were hugely impressed with the town, awarding it a Gold Medal, the highest award that can be achieved. The medal was presented at a ceremony in Harrogate, England.

Killarney was very successful in this year's Tidy Towns Competition and was awarded a seventh consecutive Gold Medal, second consecutive Regional Award and was named Ireland's Tidiest Large Town.

The construction of the Killarney Sports and Leisure centre continued during the year and it is expected that this Sports Facility will be open to the public in May 2008. The Centre will be of enormous benefit to young and old alike.

Work began on the construction of 60 social and affordable houses at Dereen. These houses are being built to the highest standard with the South facing houses being fitted with Solar Panels. It is expected that these houses will be completed in November 2008.

I would like to take this opportunity to thank my fellow Councillors, the staff of Killarney Town Council and the various groups that co-operated with the Town Council in promoting the town.

Cllr Niall O'Callaghan
Mayor of Killarney

KILLARNEY TOWN COUNCIL

TOWN MANAGER'S REPORT



John Breen,
Killarney Town Manager

Killarney Town Council has worked with the community in the past year to further enhance and develop the social, economic, cultural and residential quality of our unique Town.

The Executive and the Elected Members have worked co-operatively to develop the retailing, recreation and tourism product mix.

In the past year, Killarney's efforts to look its best have received national and international recognition in the Entente Florale, Tidy Towns and Tidiest Large Town Competition. This recognition is testament to the superb work of the Killarney Looking Good Committee, the support of the Elected Members, the work of the Council Staff and particularly the pride in Killarney shown by all residents.

A vibrant Town needs to ensure a proper business and economic mix to sustain its future. The retailing development of the Town was further enhanced in the past year with new shops opening and commitments from Flagship Retailers and Open Outlets in the Town in 2008. It is vital that we continue to complement our established tourism trade with more diversified economic activity. To this end the Council continues to work with National and Regional Agencies on the enhancement and attractiveness of Killarney as a location for business and enterprise.

Killarney is a unique place with its mixture of natural beauty, architecture and location. The challenge for us all is to ensure the development of the Town while respecting these aspects.

I wish to record my thanks to the Mayor and Members of the Council for their dedicated work on behalf of the people of Killarney over the past year. Equally, the work and dedication of the Town Clerk, Town Engineer and all the staff of the Town Council in the past year has again been of the highest standard. Killarney Town Council cannot work in isolation and the various community, business and residential groups who work with us do much to inform and develop policy and work programmes for which we thank you.

John Breen,
Killarney Town Manager

KILLARNEY TOWN COUNCIL

MEMBERSHIP OF KILLARNEY TOWN COUNCIL 2007



Cllr Niall O'Callaghan
(Mayor 2007-2008)



Cllr. Michael Courtney



Cllr Sheila Casey
(Mayor 2006-2007)



Cllr. Michael Gleeson



Cllr. Donal Grady



Cllr. Tom Doherty



Cllr. Patrick
O'Donoghue



Cllr. Sean O'Grady



Cllr. Brian O'Leary

REPORT ON KILLARNEY TOWN COUNCIL OPERATIONS

MEMBERS EXPENSES 2007

<i>Annual Allowances</i>	
Mayors Allowance	€ 8,000.00
Members Expenses	€17,091.67
Representational Payments	€33,310.88
Conferences/Seminars	€14,083.13

REPORT ON KILLARNEY TOWN COUNCIL OPERATIONS

MEMBERSHIP OF BOARDS/COMMITTEES

Kerry Educational Services (County Kerry Vocational Education Committee)

Cllr. Tom Doherty	
-------------------	--

Association of Municipal Authorities of Ireland

Cllr. Sheila Casey	Cllr. Brian O'Leary
--------------------	---------------------

Irish Public Bodies Mutual Insurances

Cllr. Sean O'Grady	
--------------------	--

Trustee Muckross House

Cllr. Michael Gleeson	
-----------------------	--

Killarney Working Group

Senator Paul Coghlan	Cllr. Tom Doherty
----------------------	-------------------

Cllr. Donal Grady	Cllr. Niall O'Callaghan
-------------------	-------------------------

Director Cork/Kerry Regional Tourism Organisation

Cllr. Michael Courtney	
------------------------	--

Social & Recreational Needs Committee

Cllr. Niall O'Callaghan	Cllr. Sean O'Grady
-------------------------	--------------------

Cllr. Tom Doherty	
-------------------	--

Town Twinning Committee

Cllr. Michael Courtney	Cllr. Tom Doherty
------------------------	-------------------

Cllr. Donal Grady	Cllr. Sheila Casey
-------------------	--------------------

Cllr. Niall O'Callaghan	
-------------------------	--

Sub-Committee for Disability Issues

Cllr. Sean O'Grady	Cllr. Tom Doherty
--------------------	-------------------

Industrial sub-Committee

Cllr. Tom Doherty	Cllr. Brian O'Leary
-------------------	---------------------

Cllr. Michael Gleeson	Cllr. Michael Courtney
-----------------------	------------------------

Cllr. Patrick O'Donoghue	Cllr. Sean O'Grady
--------------------------	--------------------

Director South Kerry Development Partnership Limited (up to April 2005)

Cllr. Sheila Casey	
--------------------	--

Killarney Tourism Council

Cllr. Michael Courtney	Cllr. Donal Grady
------------------------	-------------------

Cllr. Sheila Casey	
--------------------	--

Liaison Committee for Killarney National Park

Cllr. Brian O'Leary	
---------------------	--

REPORT ON KILLARNEY TOWN COUNCIL OPERATIONS

MEMBERSHIP OF BOARDS/COMMITTEES

Director of Killarney Technology Innovation

Mr. Sean Counihan	
-------------------	--

Lough Leane Working Group

Cllr. Sean O'Grady	
--------------------	--

Killarney Drugs Liaison Committee

Cllr. Sean O'Grady	Cllr. Donal Grady
--------------------	-------------------

Cllr. Niall O'Callaghan	Cllr. Sheila Casey
-------------------------	--------------------

Cllr. Tom Doherty	
-------------------	--

Arts Committee

Cllr. Sean O'Grady	Cllr. Sheila Casey
--------------------	--------------------

Planning & Economic Development

Cllr. Niall O'Callaghan	Cllr. Brian O'Leary
-------------------------	---------------------

Contributions to Voluntary Bodies sub-Committee

Cllr. Michael Courtney	Cllr. Niall O'Callaghan
------------------------	-------------------------

Cllr. Patrick O'Donoghue	Cllr. Sean O'Grady
--------------------------	--------------------

Cllr. Tom Doherty	
-------------------	--

Asylum Seekers, Refugees, Non-National Groups sub-Committee

Cllr. Michael Gleeson	Cllr. Brian O'Leary
-----------------------	---------------------

Cllr. Tom Doherty	Cllr. Sean O'Grady
-------------------	--------------------

Cllr. Niall O'Callaghan	
-------------------------	--

St. Finan's proposal sub-group

Cllr. Brian O'Leary	Cllr. Sheila Casey
---------------------	--------------------

Cllr. Sean O'Grady	
--------------------	--

Kerry Local Sports Partnership

Cllr. Tom Doherty	
-------------------	--

Local Traveller Accommodation Consultative Committee

Cllr. Donal Grady	
-------------------	--

REPORT ON KILLARNEY TOWN COUNCIL OPERATIONS

CIVIC RECEPTIONS / CIVIC WELCOMES

Civic Receptions		
<i>Date</i>	<i>Individual/Group</i>	<i>Venue</i>
1 May 07	Brian O'Brian – Photographer of the Year	Council Chambers
15 June 07	Mr Paddy MacMonagle, Countess Road, Killarney	Council Chambers
21 June 07	Kerry Stars	Council Chambers
19 Sept 07	Mons Liam Brosnan & Mons Noel Brosnan	Council Chambers

Civic Welcome		
<i>Date</i>	<i>Individual/Group</i>	<i>Venue</i>
20 April 07	Delegation from Staffanstop, Sweden	Council Chambers
20 July 07	Delegation from Saint Avertin, France	Council Chambers
25 Aug 07	Dog Show Judges	Fáilte Hotel
3 Sept 07	Delegation from Myrtle Beach, U.S.A.	Council Chambers
12 Oct 07	Delegation from Springfield, U.S.A.	Fáilte Hotel

REPORT ON KILLARNEY TOWN COUNCIL OPERATIONS

CONFERENCES/SEMINARS ATTENDED BY MEMBERS IN 2007

	<i>Conference/Seminar</i>	<i>Venue</i>	<i>Number of Cllrs Attending</i>
February	AMAI Spring Seminar	Brandon Hotel, Tralee	2
March	Association of County & City Councils Annual Conference 2007	Park Hotel, Dungarvan, Co. Waterford.	2
March	23 rd Annual Environmental Conference	Carrigaline Court Hotel, Co. Cork	2
April	LAMA Annual Spring Conference	Gleneagle Hotel, Killarney	1
May	European Cities Against Drugs 14 th Mayors Conference – ‘Fighting Drugs from Different Angles	Istanbul, Turkey	3
May	European Union Commission Conference – The Future of Twinning in modern Europe	Rhodes, Greece	1
May	Mental Health Ireland Annual Conference – ‘European Year of Equal Opportunities for All’	Brehon Hotel, Killarney.	2
June	Effective Communications for Councillors Seminar	Bellingham Castle Hotel, Castlebellingham, Co. Louth	2
September	AMAI 94 th Annual Conference 2007	Brandon House Hotel, New Ross, Co. Wexford	2
September	Biennial National Social Housing Conference 2007 – ‘Social Housing a life style choice’	Whites Hotel, Wexford Town	1

REPORT ON KILLARNEY TOWN COUNCIL OPERATIONS

CONFERENCES/SEMINARS ATTENDED BY MEMBERS IN 2007

	<i>Conference/Seminar</i>	<i>Venue</i>	<i>Number of Cllrs Attending</i>
October	Getting a Grip 2007 – Winning or Losing?	Malton Hotel, Killarney.	6
October	NASC Annual Conference 2007 – ‘Innovation and Sustainable Development on the Atlantic Periphery’	County Hall, Cork	1
October	Training Seminar for Councillors – Health & Safety in Local Government	The Carraig Hotel, Carrick-on-Suir, Co. Tipperary	1
November	Local Authority Members Association Annual Winter Conference	Dolmen Hotel, Carlow	3
November	E-Town Beyond 2007 The Live/Work Economic Development Solution	Kirby’s Lantern Hotel, Tarbert	1
November	National Tourism Conference – Tourism for Changing Lifestyles	Falls Hotel, Ennistymon, Co. Clare	2

REPORT ON KILLARNEY TOWN COUNCIL OPERATIONS

HOUSING

Housing Stock 2007:	269
Housing Allocations: 2007:	18

At the end of 2007 there were 618 qualified applicants on Killarney Town Council's housing list and a further two are being assessed to determine their need for re-housing.

Proposed Housing Scheme at Dereen

60 houses are now 45% completed and are on target for completion in November 2008

<i>Tenant Purchase Scheme</i>	
Applications for Purchase	12
Sales Completed	3

Refurbishment

A proposal to prepare a major regeneration programme for Ballyspillane Estate was submitted to the Department of the Environment, Heritage & Local Government. A response is awaited.

Emergency Accommodation

Killarney Town Council received Departmental approval for the block-booking of 10 beds for homeless persons in Killarney Railway Hostel in October 2004. Last year 19 people were accommodated in emergency accommodation by the Town Council.

Novas Ireland has recently purchased a property for homeless persons in Killarney and it is hoped that relevant works will commence shortly.

REPORT ON KILLARNEY TOWN COUNCIL OPERATIONS

ROADS

Killarney Town Council published its Public Road Register, and now has 42km of urban roads in its administrative area. These roads include streets, housing estate roads, distribution roads and laneways. During 2007, a total of 1.361 km of road and 1.166 km of footpaths were resurfaced.

Killarney Town Council spent €1.25m on Road Maintenance, Road Improvement, Public Lighting and Footpath Improvement.

Detailed plans were finalised and the Public Consultation process completed for the provision of a new road linking Tiernaboul to Woodlands Industrial Estate.

Detailed plans and the Public Consultation Process were also carried out for the provision of a new Roundabout and associated works at Deerpark Road.

Specific Projects

Main Street Refurbishment:

The refurbishment of Main Street was completed in May 2007. It involves the conversion of Main Street to a one-way system, and provision of granite pavements and street furniture.

New Depot & Machinery Yard:

The Public Consultation Process was completed in 2007, and the tender process commenced. It is expected that this building will be under construction by the end of 2008.

Killarney Sport & Leisure Complex:

Construction on the Sport and Leisure complex roundabout started in November, 2007 and is due to be complete in May, 2008.

REPORT ON KILLARNEY TOWN COUNCIL OPERATIONS

PLANNING

Planning	
Number of valid applications received	167
Number of planning decisions issued	150
Number of permissions granted	144
Number of permissions refused	6

Planning Enforcement

This section of the Planning Department continues to be very demanding in terms of time and resources. A total of 37 new enforcement complaints were received, processed and investigated in 2007 with a number of other ongoing files still receiving attention. In 2007, the Planning Authority issued 27 warning letters and six enforcement notices.

REPORT ON KILLARNEY TOWN COUNCIL OPERATIONS

PLANNING

Major applications received in 2007

07/4675	Mowlam Residential Care Ltd.	56 bed nursing home, 66 No. assisted living apartments and 15 No. independent living housing units at Coollegrean, Killarney
07/4709	Paul Ahern and Pat Ahern	Block A consisting of supermarket, 4 No. retail units, 6 No. office suites, 10 No. apartments, 6 No. penthouse apartments and Block B consisting of 2 No. retail units, 2 No. office suites and 2 No. duplex penthouse apartments all at former Aherns Garage, Tralee Road, Killarney
07/4712	Fitzgerald Stadium Committee	Extension to spectator stand at south eastern corner of grounds and construction of corridor at rear of western section of Dr. Eamonn O'Sullivan Stand
07/4734	The Daly Family Partnership	Construction of 4 No. apartments, 705 sq. metres of retail units, 2,341 sq. metres of retail warehousing units, 2,213 sq. metres of offices and 177 No. car parking spaces at By-Pass Road, Park, Killarney
07/4751	Hepton Developments Ltd.	Demolition of existing two-storey bedroom blocks consisting of 108 No. bedrooms and the construction of a three, four and five storey extension to hotel to include 5 No. retail units, covered grade level parking spaces, elevational changes to hotel and construction of 60 No. apartments, 8 No. hotel bedrooms, hotel administration suite and associated works at The Quality Hotel, Park Road, Killarney
07/4832	Sundays Well Properties Ltd.	Construction of 92 No. dwelling houses at Derreen, Killarney
07/4837	Cormac and Padraig Leane	Construction of 52 No. dwelling houses and 15 No. apartments at Ballycasheen, Killarney
07/4845	Mowlam Residential Care Ltd.	Construction of 13 No. houses, 4 No. apartments, medical office and shop at Coollegrean, Killarney, (this is Phase 1 of a proposed development of 260 No. dwellings).

REPORT ON KILLARNEY TOWN COUNCIL OPERATIONS

KILLARNEY AREA SERVICES CENTRE ONE-STOP SHOP

The Area Services Centre continues to provide services for both Kerry County Council and Killarney Town Council.

Key Performances

- ★ Receipting payments for both councils, such as Housing Rents and Loans, Rates, Water Services charges, Refuse charges and Traffic Fines.
- ★ 937 Kerry County Council planning applications accepted
- ★ 15,550 people taxed their vehicle through Killarney Office
- ★ Over €2.72 million in Motor Taxation fees were received

Service Indicators

Commercial Rates:	96% of amount due collected at year end
Refuse Charges:	97% of households paying Refuse Charges at year end
Non-Domestic Water Charges:	79% of amount due collected at year end

REPORT ON KILLARNEY TOWN COUNCIL OPERATIONS

ENVIRONMENT

Tidy Towns 2007

- ☆ This year was an exceptional year for Killarney as it was awarded the Best Large Town in Ireland as well as retaining its seventh consecutive Gold Medal and second consecutive Regional Award for the Cork Kerry Region.

Entente Florale 2007

- ☆ Killarney was one of 24 European towns and villages invited to take part in the prestigious European Entente Florale 2007 competition, and was honoured to be awarded a Gold Medal.
- ☆ Members of the Killarney Looking Good Committee and Staff and Elected Members of Killarney Town Council attended the ceremony in Harrogate, England.

Ireland's Best Kept Town 2007

- ☆ Killarney was named Ireland's Best Kept Town (both North and South) at Dublin Castle in July 2007.

Killarney Looking Good 2007

- ☆ The Killarney Looking Good Competition was launched in the Dromhall Hotel, Killarney in April.
- ☆ The Prizegiving Ceremony in over 30 categories took place November with Entente Florale Judge, Eamon de Stafort, the guest of honour.

Refuse Service

- ☆ Killarney Town Council continued its refuse collection service with the provision of a segregated collection service involving three separate collections during 2007.
- ☆ Of the waste collected from the 2,250 domestic and 150 commercial customers, 42% was recycled.

REPORT ON KILLARNEY TOWN COUNCIL OPERATIONS

RECREATION, AMENITY AND TOURIST DEVELOPMENT

Killarney Drugs Liaison Committee

- ☆ The Killarney Drugs Liaison Committee undertook a number of projects in 2007, in its fight against substance abuse:-
- ☆ The 'Junior Certificate Alcohol & Substance Misuse Programme' which proved to be a great success in 2006 was carried out again in 2007.
- ☆ In September the Committee, in partnership with KDYS, organised a Teenager Activity Information Night, an open night for parents and Teens to make known the options available in the Killarney area for teenagers.
- ☆ In October 2007 South Kerry Life Education Mobile Ltd. held their fourth National Conference for Local Authorities and the Public Service concerning substance and alcohol misuse – 'Getting a Grip- Winning or Losing?'

Arts Committee

- ☆ The Killarney Arts Committee continued its work throughout 2007 to help promote Arts in Killarney.
- ☆ Organised Spraoi Ciarraí in Deenagh Lodge and St Mary's Church of Ireland.
- ☆ The Eamon Kelly Memorial Bursary for Further Education in Arts was awarded to Grace Foley.
- ☆ Workshops for the elderly entitled 'Learning through Memories' were organised at St Columbanus Home

Twinning & Marketing Committee

- ☆ The Killarney Town Council Twinning and Marketing Sub-Committee continued their work in promoting Killarney all over the world. This year Killarney was twinned with Myrtle Beach in South Carolina.
- ☆ A delegation from Killarney travelled to Myrtle Beach for St. Patrick's Day and a delegation from Myrtle Beach visited Killarney later in the year. Delegates from Killarney also visited Kendal, U.K.

REPORT ON KILLARNEY TOWN COUNCIL OPERATIONS

FINANCES

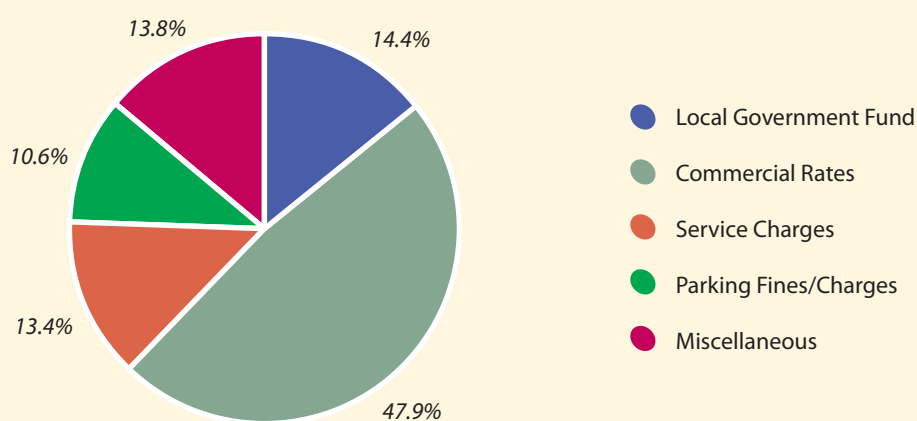
	2006	2007
Income		
Revenue	12,883,407	13,529,493
Capital	7,723,345	9,929,736
Expenditure		
Revenue	10,795,437	12,099,519
Capital	9,966,384	16,598,252
Annual Rate on Valuation	€65.49	€67.78

REPORT ON KILLARNEY TOWN COUNCIL OPERATIONS

FINANCES

	2006	2007
Sources of Revenue Income 2007	%	€
Local Government Fund	14.4%	1,942,242
Commercial Rates	47.9%	6,475,237
Service Charges	13.4%	1,810,463
Parking Fines/Charges	10.6%	1,433,212
Miscellaneous	13.8%	1,868,339

Sources of Revenue Income 2007



REPORT ON KILLARNEY TOWN COUNCIL OPERATIONS

KILLARNEY SPORTS & LEISURE CENTRE

The contract for the construction of the Killarney Sports & Leisure Centre was awarded to Frank McGrath Construction Ltd in March 2006. Work commenced in April 2006 and the Leisure Centre is due to open in July 2008.

The Leisure Centre will be operated by Aura Sport & Leisure Management and is located on a 4 acre site at Deerpark donated by Kerry County Council

The cost of the project is €16m and is being funded from Killarney Town Council's own resources, government grants from the Department of Art Sport & Tourism and a loan.

The following facilities are being provided:

- ☆ 33 x 31m Sports Hall – international size basketball court with spectator seating for 550
- ☆ 97m² aerobics room
- ☆ 300m² state of the art gym
- ☆ 25 x 10.5 main pool (with hoist) – 5 lanes
- ☆ 7 x 8 learner pool with adjacent toddler water and beach area
- ☆ Crèche/Drop-in Centre
- ☆ Health suite (spa, sauna, steam room)
- ☆ 3 Treatment rooms (for physiotherapy, aromatherapy, etc)
- ☆ Wet village changing facilities & separate dry changing and team changing facilities.

REPORT ON LISTOWEL TOWN COUNCIL OPERATIONS

FOREWORD BY AN MHEARA



Pat Loughnane,
Mayor of Listowel

I am privileged to have an opportunity as Mayor of Listowel to reflect on 2007 and on the many challenges and opportunities facing Listowel Town Council during the year.

As Listowel continues to expand, the Town Council strives to continuously improve the services and facilities that they are responsible for.

A new car park was developed during the year at the Listowel Emmets GAA ground and the Members and Trustees of Emmets are to be commended for facilitating this much needed car park.

As well as providing parking at this location, this agreement allowed for improvement works to be carried out on the front boundary wall of Frank Sheehy Park. This has complemented the work undertaken on the adjacent burial ground wall and has improved the overall appearance of the road.

Listowel Farmers Market has been running every Friday in The Square since June. Since then it has grown from strength to strength and has built a strong local customer base. The market has undoubtedly added a vibrant atmosphere to the Square and I would like to wish it continued success.

I would like to congratulate TABLE, the Tidy Towns Group who regained a bronze medal for Listowel in the 2007 Tidy Towns competition. As Mayor I would like to commend them on their hard work throughout the year, and look forward to working with them over the coming years to implement their ambitious three year plan for the town.

The Council also hosted a Civic Reception to acknowledge the contribution made by Michael Dowling to the town of Listowel.

Finally, I would like to thank my fellow Councillors, Management and Staff of Listowel Town Council for their co-operation, dedication and hard work over the year.

Pat Loughnane,
Mayor of Listowel

REPORT ON LISTOWEL TOWN COUNCIL OPERATIONS

TOWN MANAGER'S REPORT



Anne Haugh
Town Manager

Housing construction continued in Listowel town in 2007 with private developments commencing in the Clieveragh area.

Meanwhile, Respond Voluntary Housing Organisation completed a voluntary housing scheme in the town which will provide 14 elderly units and 20 family units together with a community facility.

The Town Council also commenced construction of eight one-bedroom houses in Feale Drive/ O'Connell's Avenue and acquired eight affordable housing units on the Ballybunion Road. Listowel Town Council continued its program of improvement of Local Authority Housing with the completion of an insulation programme for its housing stock.

In addition, 2007 saw work start on a retail store on the John B. Keane Road and the opening of the Decentralised Revenue Offices in the town.

The Town Council upgraded the wall at St. Michael's Burial Ground and constructed a new front boundary wall at Listowel Emmets Sportsfield. This work not only enhances the appearance of the approach road to the town, it also provides for a car park at Emmets GAA ground, which was one of the aims of the Listowel Town Council Development Plan. The car park is expected to be open from early 2008.

Through continued co-operation with Voluntary and Community groups, Listowel Town Council continues its street cleaning and litter management services and hopes to build on the success of receiving a Bronze Medal in the 2007 Tidy Towns competition.

Looking forward to 2008, the proposed development of the Old Mart site would see the continued economic development of the town. Listowel Town Council will also be drawing up plans for the upgrading of the Town Park and the children's playground and is looking forward to working with Community Groups, sporting organisations, interested individuals and elected members in preparation of this plan.

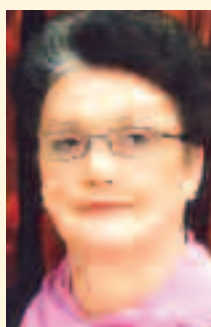
Anne Haugh
Town Manager

REPORT ON LISTOWEL TOWN COUNCIL OPERATIONS

COUNCIL MEMBERS



Cllr. Jacqueline Barrett



Cllr. Maria Gorman



Cllr. David Toomey



Cllr. Denis Stack



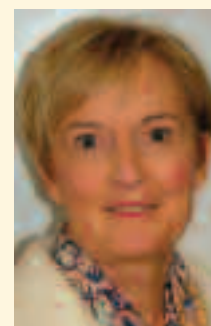
Cllr. Anthony Curtin
(Mayor 2006/2007)



Cllr. Pat Loughnane
(Mayor 2007/2008)



Cllr. Tim O'Leary



Cllr. Madeline O'Sullivan



Cllr. Tom Walsh

** Cllr Ned O'Sullivan elected to the Seanad. Madeline O'Sullivan co-opted to his Listowel Town Council seat in September 2007*

REPORT ON LISTOWEL TOWN COUNCIL OPERATIONS

MEMBERSHIP OF OTHER BODIES

Kerry Education Service

Cllr Maria Gorman

Cllr Pat Loughnane

Kerry Literary & Cultural Centre

Cllr Tom Walsh

Kerry County Tourism Committee

Cllr Maria Gorman

Kerry County Development Board

Cllr Tom Walsh

Association of Municipal Authorities of Ireland

Cllr Ned O'Sullivan (Cllr.
Gorman September 2007)

Cllr Pat Loughnane

Kerry Strategic Policy Committee Representatives

Cllr Denis Stack

Cllr Tom Walsh

Local Authorities Members Association

Cllr Maria Gorman

ISDN

Integrated Shannon

Listowel Community Centre Ltd.

Cllr Tom Walsh

Decentralisation Network

Cllr. Maria Gorman

St. John's Arts & Heritage Centre

Cllr. Maria Gorman

North Kerry Tourism Federation

Cllr. Pat Loughnane

REPORT ON LISTOWEL TOWN COUNCIL OPERATIONS

CONFERENCES/SEMINARS ATTENDED BY MEMBERS IN 2007

<i>Month</i>	<i>Conference</i>	<i>Location</i>	<i>Number of councillors attending</i>
February	Northern Tourism Conference	Ennistymon, Co. Clare	2
February	AMAI Annual Spring Seminar	Tralee, Co. Kerry	2
March	Fáilte Ireland Tourism Briefing	Killarney, Co. Kerry	1
May	Kerry Mental Health Association Conference	Killarney, Co. Kerry	1
May	AMAI Special General Meeting	Kildare	2
September	AMAI Annual Conference	New Ross, Co. Wexford	3
September	Local Government & Local Development Conference	Tullamore, Co. Offaly	2
November	National Tourism Conference	Ennistymon, Co. Clare	1
November	LAMA Annual Winter Seminar	Carlow	2
November	E-Towns Conference	Tarbert, Co. Kerry	1
December	Confederation of European Councillors	Enniskillen, Co. Fermanagh	1

REPORT ON LISTOWEL TOWN COUNCIL OPERATIONS

CONFERENCES/SEMINARS ATTENDED BY MEMBERS IN 2007

Civic Receptions 2007

November 2007:

Reception for Michael Dowling

Members Expenses

Annual Allowances

Mayor	€2,500
Deputy Mayor	€650
Members Expenses	€46,000
Representational Payments to Members	€33,500
Conferences/Seminars	€10,211

REPORT ON LISTOWEL TOWN COUNCIL OPERATIONS

HOUSING & SOCIAL SUPPORT

Housing Capital Programme 2007

Capital Allocation	€1,500,000
Housing New Starts	8
Schemes In Progress	Feale Drive/ O'Connell's Ave

Number of Dwellings let in 2007

Newly Built and Newly Acquired Dwellings	6
Casual Vacancies	13
Total	19
Dwellings sold to tenants in 2007:	3
Number of qualified Housing Applicants at 31st December, 2007:	144

Central Heating/Insulation Programme

The Central Heating Programme was completed in the Housing Stock in 2006 and a further Programme of Housing Insulation was completed in 2007.

A total of 116 Listowel Town Council Houses were insulated under this scheme.

Affordable Housing

A total of three affordable houses were purchased at Curragh Close, Listowel through a Part V agreement in 2007. Agreement was reached during the year for seven more affordable houses through Part V which will be available in 2008.

REPORT ON LISTOWEL TOWN COUNCIL OPERATIONS

ROADS & TRANSPORTATION

Roads & Transportation	
<i>2007 Non-National Road</i>	<i>Grant Allocation</i>
Block Grant	€77,000
Special Block Grant	€127,000

The 2007 Roads Programme included surfacing works on the Ballygologue Road from the entrance to Ballygologue Park to the Town Boundary, and resurfacing of laneways in Ballygologue. Major footpath improvements were carried out in Cherrytree Drive, Hawthorn Drive, Knockroe Drive and Greenville Road

WATER SERVICES

A leak detection company was employed by the Town Council during the year to carry out a complete survey of the town. This resulted in a significant decrease in water consumption in the town and consequent savings in the cost of water. Major Sewer upgrade works took place at O'Connell's Avenue.

REPORT ON LISTOWEL TOWN COUNCIL OPERATIONS

TOWN IMPROVEMENT PROGRAMME

The Town Improvement Programme is financed by on-street parking charges.

The Programme allows the Council to provide a modern Public Convenience and to employ a Town Gardener, thus improving the overall appearance and presentation of the town for both residents and visitors alike.

In 2007 Listowel Town Council introduced a further eight pay parking machines on Church Street and William Street. Upgrading works on the footpaths in the Town Park were also undertaken during the year.

Tidy Towns 2007

In the 2007 Tidy Towns Competition, Listowel received a bronze medal. The high ranking in Tidy Towns is largely due to the combined efforts of the hard working T.A.B.L.E. (Towards A Better Listowel Everybody) committee and our outdoor staff.

Refuse Collection

2007 saw a steady increase in the Town Council customer base. Plans will be put in place during 2008 to introduce an organic waste collection by 2009.

REPORT ON LISTOWEL TOWN COUNCIL OPERATIONS

PLANNING AND DEVELOPMENT

The level of planning activity showed a decrease in 2007 with 61 applications received compared to 113 in the previous year. Of the 61 applications received, 17 were deemed to be invalid and had to be resubmitted by the applicants.

Major Planning Applications Received and Granted in 2007

<i>Applicant</i>	<i>Application</i>
Kerry County Council	Application to construct 30 dwellings at Ballygologue
Listowel Race Company	Construct new two story hospitality building at Listowel Race Course

REPORT ON LISTOWEL TOWN COUNCIL OPERATIONS

FINANCE

Finances	
Annual Rate of Valuation 2007	€73.09

Expenditure	
Revenue	€3,532,910
Capital	€2,687,395

Main Sources of Revenue Income	€
Commercial Rates	1,433,353
Local Government Fund	841,180
Road Grants	204,000
Water, Sewerage & Refuse	401,000
Rent	265,000
Planning Fees	40,000
Contribution from Kerry County Council	53,000
Staff Pension Contributions	38,783
Parking Fines/Fees	185,000

National Service Indicators

NATIONAL SERVICE INDICATORS

ARTS & CULTURE		2007	2006
A1	Grants		
	No of grants Paid	120	96
	Total Value of Grants Paid	111,169	99,700

COMMUNITY PARTICIPATION & COOPERATION		2007	2006
CP1	% of Local Schools involvement		
	% of Local Schools involved in the local Youth Council/Comhairle na n-Óg Scheme	100%	100%

CORPORATE ISSUES		2007	2006
C1	% of working days		
	% of working days lost to sickness absence through Certified leave	4.87%	4.05%
	% of working days lost to sickness absence through uncertified leave	0.81%	0.92%
C2	Exp on Training & Dev. as a % of total payroll costs		
		4.91%	5.27%

NATIONAL SERVICE INDICATORS

ENVIRONMENTAL SERVICES		2007	2006
E1	% of river channel which is unpolluted		
	% of river channel which is slightly polluted		
	% of river channel which is moderately polluted		
	% of river channel which is seriously polluted		
E2	% of drinking water analysis results in compliance with statutory requirements with regard to public schemes		
	% of drinking water analysis results in compliance with statutory requirements with regard to private schemes		
E3	Average time		
	Average time, in minutes to mobilise fire brigades in full time stations	N/A	N/A
	Average time, in minutes to mobilise fire brigades in Part time stations	5.25	5.7
E4	% of attendance at scenes where		
	(a) first attendance is at scene within 10 minutes	43.97	44.46
	(b) first attendance is at scene after 10 minutes but within 20 minutes	38.58	38.65
	(c) first attendance is at scene after 20 minutes	17.45	16.89
E5	Fire Prevention - Total no of Fire Safety Certificate applications		
	(a) received	287	292
	(b) processed	415	319

NATIONAL SERVICE INDICATORS

WASTE MANAGEMENT		2007	2006
E6	% of households provided with segregated waste collection		
		100%	100%
E7	Household waste collected which is sent for recycling		
	(a) Tonnage	6847	6564
	(b) % of household waste collected	23.00%	22.28%
E8	Household waste collected which is sent to landfill		
	(a) tonnage	23343	23308
	(b) % of household waste collected	77.00%	77.20%
E9	Recycling Facilities		
	GLASS		
	(a) No of Bring Sites	94	85
	(b) No of Civic Amenity Sites	5	5
	(c) total no of facilities	99	90
	(d) total no of locations	99	90
	(e) Tonnage of waste collected for recycling	2573	2060
	CANS		
	(a) No of Bring Sites	94	85
	(b) No of Civic Amenity Sites	5	5
	(c) total no of facilities	99	90
	(d) total no of locations	99	90
	(e) Tonnage of waste collected for recycling	215	200

NATIONAL SERVICE INDICATORS

WASTE MANAGEMENT		2007	2006
E9	TEXTILES		
	(a) No of Bring Sites	0	0
	(b) No of Civic Amenity Sites	1	1
	(c) total no of facilities	1	1
	(d) total no of locations	1	1
	(e) Tonnage of waste collected for recycling	15	1.1
	BATTERIES		
	(a) No of Bring Sites	0	0
	(b) No of Civic Amenity Sites	5	5
	(c) total no of facilities	5	5
	(d) total no of locations	5	5
	(e) Tonnage of waste collected for recycling	45	44.5
	OILS		
	(a) No of Bring Sites	0	0
	(b) No of Civic Amenity Sites	5	5
	(c) total no of facilities	5	5
	(d) total no of locations	5	5
	(e) Tonnage of waste collected for recycling	11	10
	OTHERS		
	(a) No of Bring Sites	7	7
	(b) No of Civic Amenity Sites	5	5
	(c) total no of facilities	12	12
	(d) total no of locations	12	12
	(e) Tonnage of waste collected for recycling	1103	2171

NATIONAL SERVICE INDICATORS

LITTER PREVENTION & ENVIRONMENTAL ENFORCEMENT		2007	2006
E 10	No of Litter Wardens		
	(a) Total no of Full time Litter Wardens	4	4
	(b) total no of Part time Litter Wardens	7	8
	(c) total no of Litter Wardens (both full & part Time	11	12
	On the Spot Fines		
	(a) No of on the Spot Fines	258	322
	(b) No of prosecution cases taken because of non payment of on the spot fines	31	60
	(c) No of prosecutions secured	9	18
	% of Areas within the Local Authority that are		
	(a) Unpolluted (i.e. litter free)	15.54	8.48
	(b) slightly polluted with litter	42.86	58.47
	(c) moderately polluted with litter	40.34	28.39
	(d) Significantly polluted with litter	1.26	4.66
	(e) Grossly polluted with litter	0	-
E 11	Environmental Complaints & Enforcement		
	Total no of cases subject to complaints concerning environmental pollution (relating to waste, litter, water pollution, noise pollution, air pollution)	1486	1517
	No of complaints investigated	1465	1266
	No of enforcement procedures taken	116	137
E12	% of Schools participating in environmental campaigns		
	(a) Primary Schools	70.62%	56
	(b) Secondary Schools	85.18%	89

NATIONAL SERVICE INDICATORS

HOUSING		2007	2006
H1	Housing vacancies		
	Total no of dwellings in local authority stock	3824	3731
	Overall % of dwellings that are let	93.85	94.67
	Overall % of dwellings that are empty	6.15	5.33
	% of empty dwellings subject to major refurbishment schemes	28.94	15.58
	% of empty dwellings unavailable for letting	65.87	73.21
	% of empty dwellings available for letting	34.13	26.79
H2	Average time taken to re-let dwellings available for letting (in weeks)		
		10.98	9.24
H3	No of repairs completed as a % of the no of valid repair requests received		
		94.80	87.3
H4	Average time taken to inform applicants of local authority's decision on applications for		
	(a) Shared ownership housing scheme (in days)	10.75	15
	(b) Housing Loans Schemes (in days)	27	36
	(c) Local authority Housing (in days)	115.63	121.32
H5	Traveller Accommodation		
	Total no of traveller families accommodated as a % of the targets set in the local traveller accommodation programme	124%	143%

NATIONAL SERVICE INDICATORS

LIBRARY SERVICES		2007	2006
L1	Public Opening Hours		
	(a) Average no of opening hours per week for full time libraries	32	32.3
	(b) Average no of opening hours per week for part-time libraries (where applicable)	N/A	N/A
L2	No of registered Library Members		
		18,963	50,655
L3	Total no of items issued for		
	(a) Books	382,804	367,166
	(b) Others	0	0
L4	Percentage of libraries that offer Internet access to the Public		
		100%	100%
L5	Total number of Internet sessions provided		
		50,128	61,977

NATIONAL SERVICE INDICATORS

MOTOR TAXATION		2007	2006
M 1	No of Motor Tax transactions which are		
	(a) Dealt with over the counter	95,349	97607
	(b) Dealt with by post	48,809	46717
	(c) Dealt with in other ways		
	% of Motor Tax transactions which are		
	(a) Dealt with over the counter	66.14	67.63
	(b) Dealt with by post	33.86	32.37
	(c) Dealt with in other ways	0	
M 2	No of postal applications which are dealt with (i.e. disc/driver licence issued) from receipt of the application		
	(a) on the same day	26,666	22835
	(b) on the third day or less	18,116	9949
	(c) on the fifth day or less	3,246	3615
	(d) over 5 days	781	10318
	% of overall postal applications which are dealt with (i.e. disc/driver licence issued) from receipt of the application		
	(a) on the same day	54.63	48.88
	(b) on the third day or less	37.12	21.3
	(c) on the fifth day or less	6.65	7.74
	(d) over 5 days	1.6	22.08
M 3	Public Opening Hours		
	Average no of opening hours per week	30	30

NATIONAL SERVICE INDICATORS

PLANNING & BUILDING CONTROL		2007	2006
P1	Planning Applications -Decision Making Individual Houses		
	No of Applications decided	1769	1900
	No of decisions which were decided within 8 weeks	1015	1034
	No of decisions which required the submission of further information	628	783
	No of decisions where an extension of time was agreed to by the applicant, under section 34(9) of the Planning and Development Act 2000	126	83
	Average length of time taken (in days) to decide a case where further information was sought	79	79
	% of grants	62.86%	74.74%
	% of refusals	37.14%	25.26%
	% of cases where the decision was confirmed, with or without variations, by An bord Pleanála	73.17%	54.76%
	% of cases where the decision was reversed by An Bord Pleanála	26.83%	45.24%

NATIONAL SERVICE INDICATORS

		2007	2006
	New Housing Developments		
	No of Applications decided	419	543
	No of decisions which were decided within 8 weeks	197	260
	No of decisions which required the submission of further information	185	238
	No of decisions where an extension of time was agreed to by the applicant, under section 34(9) of the Planning and Development Act 2000	37	45
	Average length of time taken (in days) to decide a case where further information was sought	82	87
	% of grants	56.09	57.46%
	% of refusals	43.91	42.54%
	% of cases where the decision was confirmed, with or without variations, by An bord Pleanála	59.74	57.41%
	% of cases where the decision was reversed by An Bord Pleanála	40.26	42.59%

NATIONAL SERVICE INDICATORS

		2007	2006
	Other: Not Requiring EIA		
	No of Applications decided	2442	1989
	No of decisions which were decided within 8 weeks	1949	1506
	No of decisions which required the submission of further information	464	454
	No of decisions where an extension of time was agreed to by the applicant, under section 34(9) of the Planning and Development Act 2000	29	29
	Average length of time taken (in days) to decide a case where further information was sought	78	77
	% of grants	91.61	90.75%
	% of refusals	8.39	9.25%
	% of cases where the decision was confirmed, with or without variations, by An Bord Pleanála	56.52	70.13%
	% of cases where the decision was reversed by An Bord Pleanála	43.48	29.87%

NATIONAL SERVICE INDICATORS

		2007	2006
	Others Requiring EIA		
	No of Applications decided	12	10
	No of decisions which were decided within 8 weeks	7	3
	No of decisions which required the submission of further information		5
	No of decisions where an extension of time was agreed to by the applicant, under section 34(9) of the Planning and Development Act 2000	0	1
	Average length of time taken (in days) to decide a case where further information was sought	93	90
	% of grants	91.67%	90%
	% of refusals	8.33%	10%
	% of cases where the decision was confirmed, with or without variations, by An Bord Pleanála	60.00%	100%
	% of cases where the decision was reversed by An Bord Pleanála	40.00%	0%

NATIONAL SERVICE INDICATORS

PLANNING & BUILDING CONTROL		2007	2006
P 2	Planning Enforcement		
	Total no of cases subject to complaints that are investigated	563	620
	Total no of cases subject to complaints that are dismissed	162	104
	Total no of cases subject to complaints that were resolved through negotiations	256	339
	No of enforcement procedures taken through warning letters	189	289
	No of enforcement procedures taken through enforcement notices	162	198
	No of prosecutions	35	10
P 3	Public Opening Hours		
	Average no of opening hours per week	40	40
P 4	Consultations		
	No of pre planning consultations meetings held	1658	2719
	Average length of time (in days) from request for consultation with local authority planner to actual formal meeting for pre planning consultation	9.35	9.61
P 5	Buildings inspected as a percentage of new buildings notified to the local authority		
		25.32%	46.42%

NATIONAL SERVICE INDICATORS

RECREATIONAL SERVICES		2007	2006
REC 1	No of Children's playgrounds		
	Directly provided by the Local Authority	6	5
	Facilitated by the Local Authority	13	9
REC 2	No of visitors to local authority facilitated swimming facilities		
		217,404	229,788

NATIONAL SERVICE INDICATORS

REVENUE COLLECTION		2007	2006
Rev 1	House Rent		
	(a) the Amount collected at year end as a percentage of amount due		93.09%
	(b) Percentage of Arrears		
	(i) 4-6 weeks old		9.40%
	(ii) 6-12 weeks old		10.26%
	(iii) more than 12 weeks old		68.86%
Rev 2	Housing Loans		
	(a) Amount Collected at year end as a percentage of amount due		88.87%
	(b) Percentage of Arrears		
	(i) 1 month old		8.31%
	(ii) 2-3 months old		4.38%
	(iii) more than 3 months old		87.31%
Rev 3	Commercial Rates		
	Amount collected at year end as a percentage of amount due		94.64%
Rev 4	Refuse Charges		
	Percentage of households paying refuse charges at year end		99.01%
Rev 5	Non Domestic Water Charges		
	Amount collected at year end as a percentage of amount due		77.46%

NATIONAL SERVICE INDICATORS

ROADS		2007	2006
R 1	Local & Regional roads surfaced dressed per annum (sq meters)		
		665,379	329675
	Percentage of local & regional roads surface dressed per annum		
		3.76%	1.86%

Recruitment Gender Balance

RECRUITMENT GENDER BALANCE

No. of People Employed – 31 December, 2007	
Breakdown	No. of Staff
Managerial/Administrative	437
Engineering/Technical	208
Operational and Outdoor	712
Total	1,357

Male/Female Employee Breakdown			
Breakdown of Staff	Male	Female	Total
Managerial/Administrative	121	316	437
Engineering/Technical	173	35	208
Operational/Outdoor W/T	412	2	414
P/T	251	47	298
Total	957	400	1,357

Competition Statistics 2007	
No. Competitions Held	71
No. Applications Received	
Male	1458
Female	824
Total No. Applications Received	2,282

*RECRUITMENT GENDER BALANCE***Placement Schemes and Work Shadowing**

The Council continued its association with placement schemes for second and third level and post-primary schools:-

Work Shadowing	33
Work Experience	21
Total no. Student Placements in 2007	54

Corporate Plan Review

CORPORATE PLAN REVIEW

The Kerry Local Authorities Corporate Plan 2004 - 2009 was adopted in January 2005.

Our aim, as the democratically elected bodies of the County, is to enhance the quality of life of its people and visitors by facilitating economic, social and cultural progress which will be inclusive, integrated and environmentally sustainable.

To deliver on these aims, the Corporate Plan contains eight strategic objectives and also sets out the Implementation and Monitoring Framework to ensure progress is achieved on each of the objectives. It was agreed by Management that the following corporate priorities would be the primary focus for 2007:-

- 1. Lead the forward planning and the development of infrastructure in the county.**
- 2. Ensure excellence through efficiency, improved performance, achieving value for money, and maximising the use of IT innovation.**
- 3. Enhance the leadership role of Kerry Local Authorities and incorporate social inclusion objectives into our strategies, plans and policies, and**
- 4. Be customer focused**

Under the Implementation Framework, each Director, along with their staff, prepares an Operational Plan for the delivery of the services of the Directorate. The Directors' Operational Reports outline the achievements in accordance with their department's Operational Plan, having regard to the corporate priorities outlined above.

During 2007, the Council completed the roll out of the Performance Management and Development System across the four Kerry Local Authorities in accordance with the Local Government Sectoral Commitment of Towards 2016 – Ten Year Social Partnership Agreement 2006-2015.

Through this process, responsibility for the delivery of the key objectives of the Operational Plan are delegated to staff, and individual training needs are focused on developing the required skills to provide effective delivery of services.

Significant investment in resources to the Forward Planning Unit resulted in a large number of Local Area Plans being drafted and considered by the Council during 2007.

Local Area Plans for the West An Daingean, North Kerry, Southeast Kerry and West Iveragh Settlements were approved by Council along with Local Area Plans for Farranfore, Ballybunion, Rathmore and the Environs of Tralee & Killarney. Local Area Plans were adopted for 48 settlements at year end with a further 39 to be completed in 2008.

With regard to the development of major infrastructure in the County, substantial progress was achieved in the provision of roads, water services, social & affordable housing, environmental services and customer focused integrated area offices. The increase in capital expenditure in these areas from €112 million to €126.3 million is indicative of our drive and commitment to deliver on our objective of providing the necessary infrastructure to achieve our strategic aims.

The data on the 42 National Service Indicators, given in this report, have been compiled in accordance with the criteria set out in the methodology by the Local Government Management Services Board. In particular, improvements in our services have been recorded in the following areas.

Housing: The number of houses in Local Authority Stock increased from 3,731 in 2006 to 3,824 in 2007.

Planning: 1,658 Pre-planning Consultation Meetings held during 2007.

Motor Taxation: 38,238 transactions or 26.74% of total number of transactions completed on-line in 2007.

Revenue Collection: The revenue collection in respect of Housing Rents, Housing Loans and Commercial Rates is very good, with collection rates ranging from 93% to 96%.

Overall the 42 National Service Indicators confirms Kerry Local Authorities commitment to providing a good quality service to our customers.