

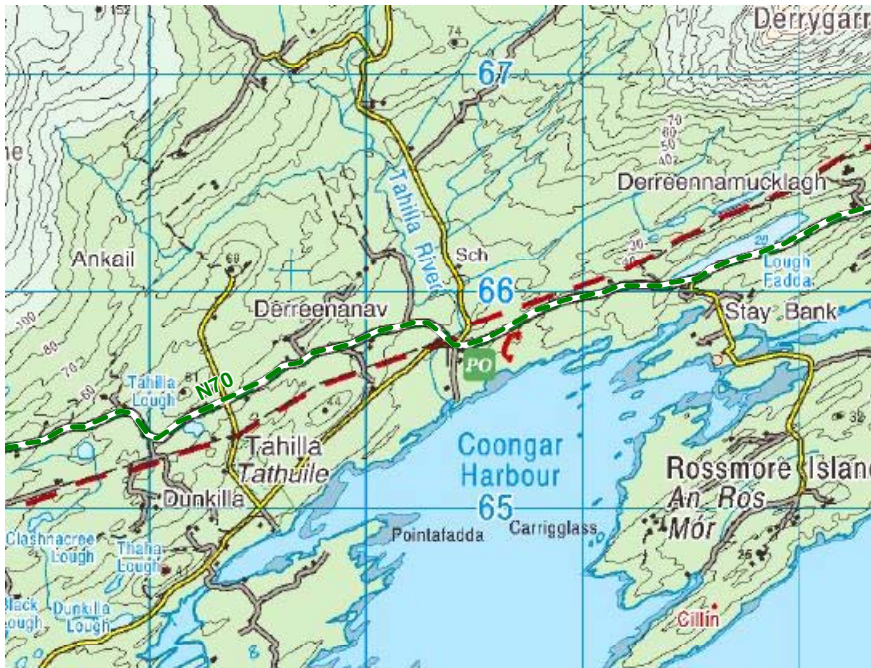


TAHILLA

1.0 CONTEXT

Location

Tahilla (Tathuille) is a small village located at a crossroads on the N70 on the Iveragh Peninsula and on the Ring of Kerry tourist route. Tahilla is approximately 6km to the east of Sneem.



Population

There are no population figures for the village of Tahilla. Tahilla is located within the Electoral District of Tahilla. The population of this ED increased substantially in the census period between 1996 and 2002 from 174 to 207 persons or by 19%. However, in the inter-censal period between 2002 and 2006 the population decreased from 207 to 193 persons or by 6.8%.

Facilities

There are very limited facilities in Tahilla which comprise of a church at the crossroads and a primary school to the north of the crossroads. While the village is located on the Ring of Kerry tourist route, it is not a stop-off point.

Infrastructure

There is no waste water treatment plant in the village and there is no plan to construct one over the period of the plan. Dwellings in the area are served by individual septic tanks and waste water treatment systems.

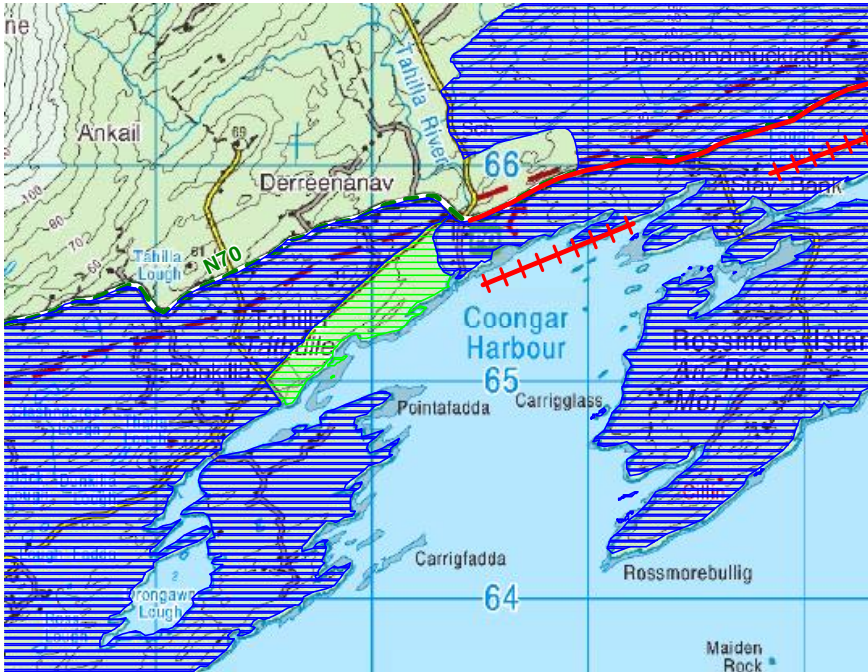
Settlement Form

The settlement of Tahilla is centred on a cross roads. The Catholic Church is located to the south of the crossroads. The bridge to the west of the village is currently being widened. There is a large parking area on the northern side of the crossroads.



Natural Environment

The settlement is located in close proximity to the coast and there are large wooded areas giving it a high quality natural setting. The Tahilla River also runs through the settlement. There are areas of both prime and secondary amenity in the surrounding rural area. There are also views and prospects along the N70 to the east of the crossroads.



Above: Amenity areas and views and prospects as designated in the Kerry County Development Plan 2003-2009.

Built Heritage

Tahilla Catholic Church (Ref 2131001) is the only protected structure in the village. The Church dates from 1775 and is now in ruins.



2.0 DEVELOPMENT STRATEGY

- Tahilla is a small development node in a rural area centred around a crossroads. It is located on the N70 where the maximum speed limit applies. There are very limited facilities/services available and there has been no demand for development in the area with the exception of rural dwellings. There is no wastewater treatment facility in the area and there are no plans to construct one in the period of the plan. The development strategy for the area is therefore to promote permanent residential development in keeping with the exiting settlement pattern. The development of a village core with streetscape or higher density development is not envisaged.

3.0 OVERALL OBJECTIVES

Objective No	It is an objective of the Council to/that;
OO-1	Future development in the area will be small in scale and should take the form of one-off dwellings or cluster-type developments located on the minor roads off the crossroads. A limited amount of ancillary facilities such as a shop will also be permitted at suitable locations.
OO-2	New developments should be designed to a high standard to ensure integration with the landscape.
OO-3	Retain the protected views and prospects, the amenity areas and protected structure as designated in the Kerry County Development Plan 2003-2009.
OO-4	Prepare a tree preservation order for appropriate trees throughout the settlement and promote additional planting .
OO-5	Physical with the bed or banks of the Tahilla River will be subject to the approval of the South West Regional Fisheries Board and the OPW.
OO-6	Dwellings in the area shall be reserved for permanent residential use.